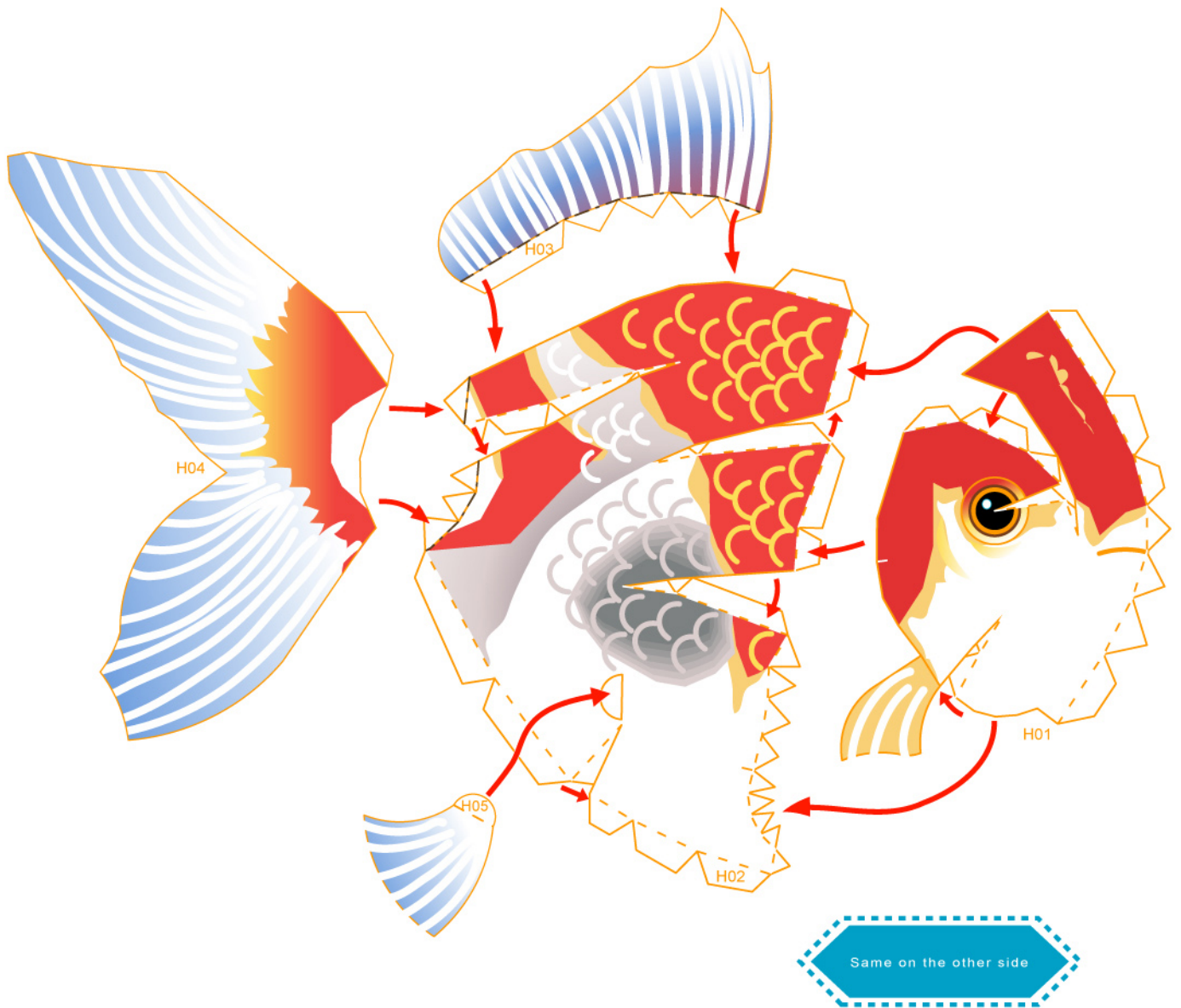
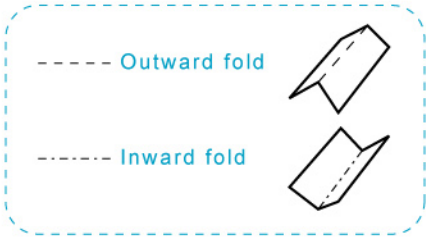


Assembly Instructions



Basic steps



1 Separate all parts along the lines. Mark their identity on the back to avoid confusion.



2 Use a pen whose ink has dried out, or a tracer, to trace lines first.

Instructions



3 Fold and glue G01 and G02 respectively.



4 Glue G01 and G02, and then glue G04 to the above parts.



5 Glue G03, G05 and the above parts together to form left part of body.



6 The instructions for the right part of the body (H01, H02, H03, H04 and H05) are the same as above.



7 Assemble the left and right parts of the body, and you now have a vivid gold fish.