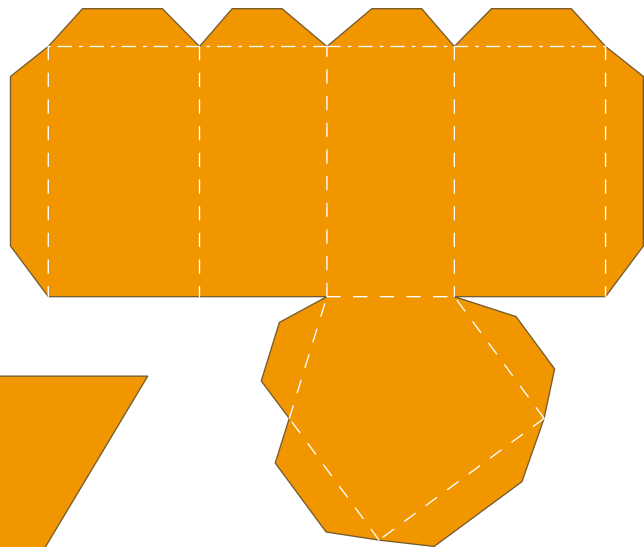


Y01



Y02



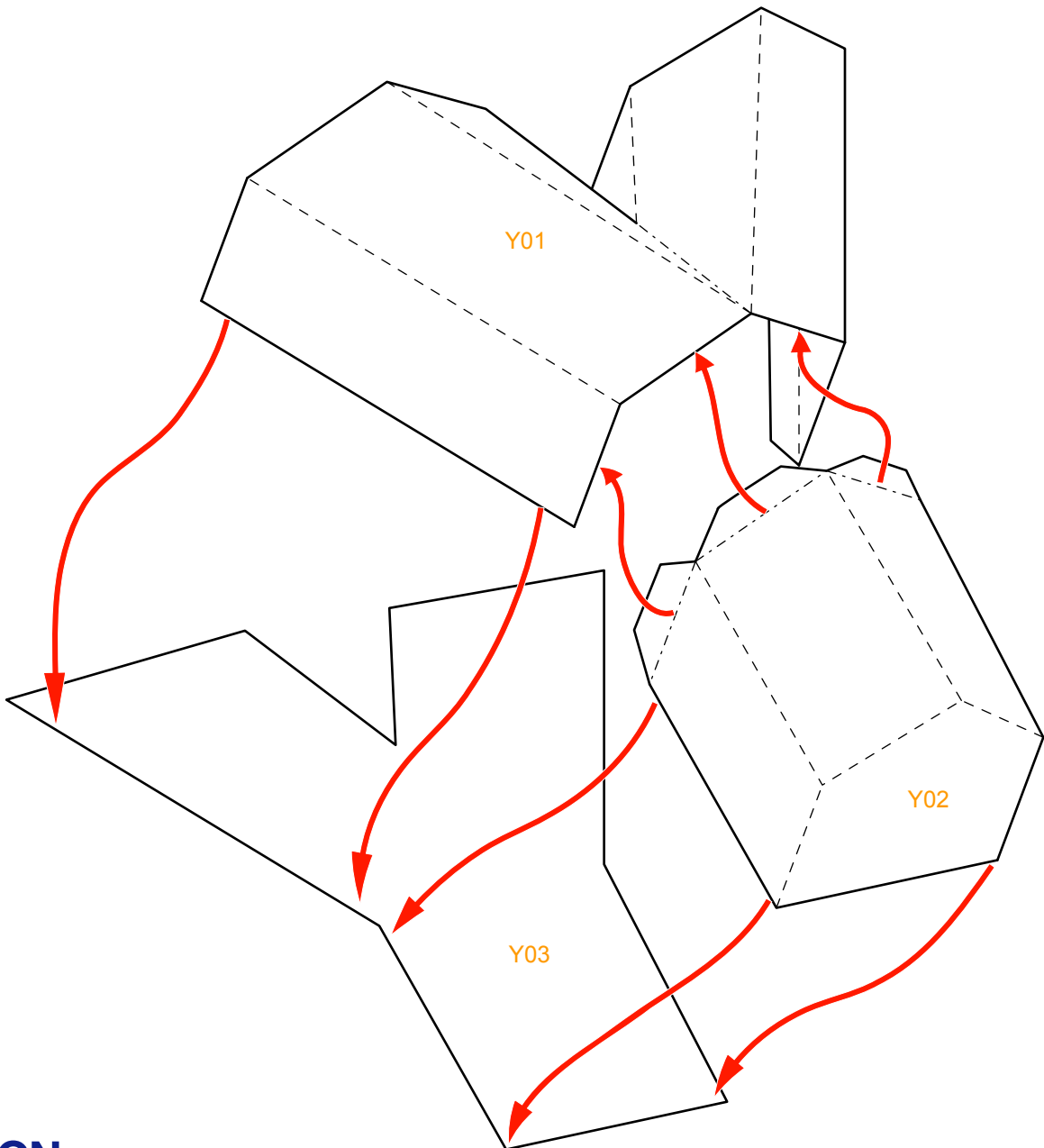

Y03

### Assembly Instructions

--- Outward fold

--- Inward fold

✗ Cut away parts



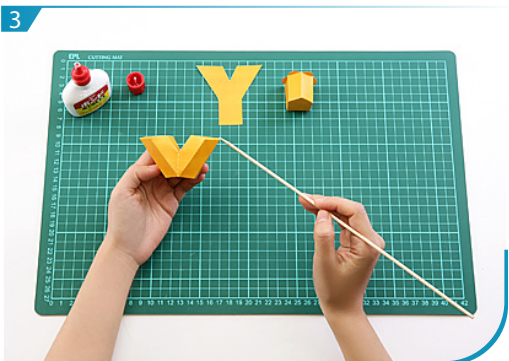
Instructions



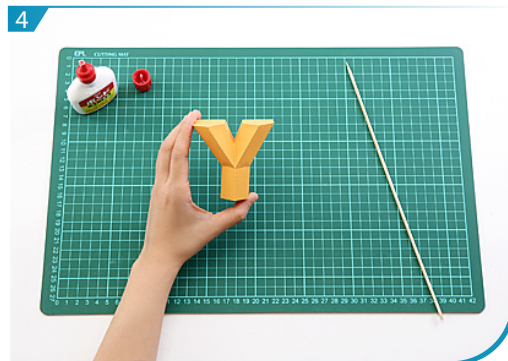
1 Use a pen whose ink has dried out, or a tracer, to trace lines first.



2 Separate all parts along the lines. Mark their identity on the back to avoid confusion.



3 Fold and glue Y01 and Y02 respectively.



4 Glue Y01, Y02 and Y03 according to the assembly instruction, Letter "Y" is now done.