

Assembly Instructions

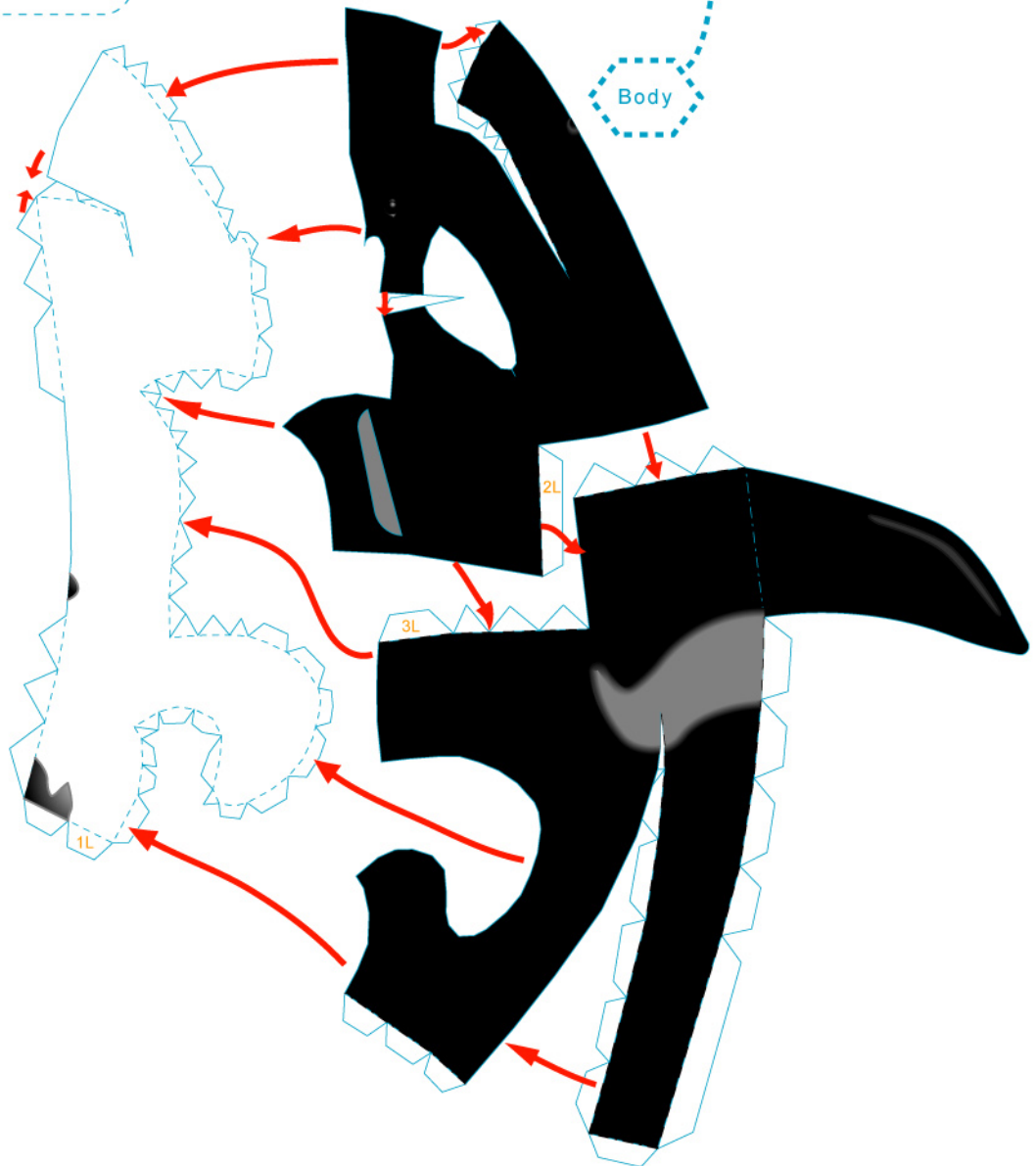


--- Outward fold

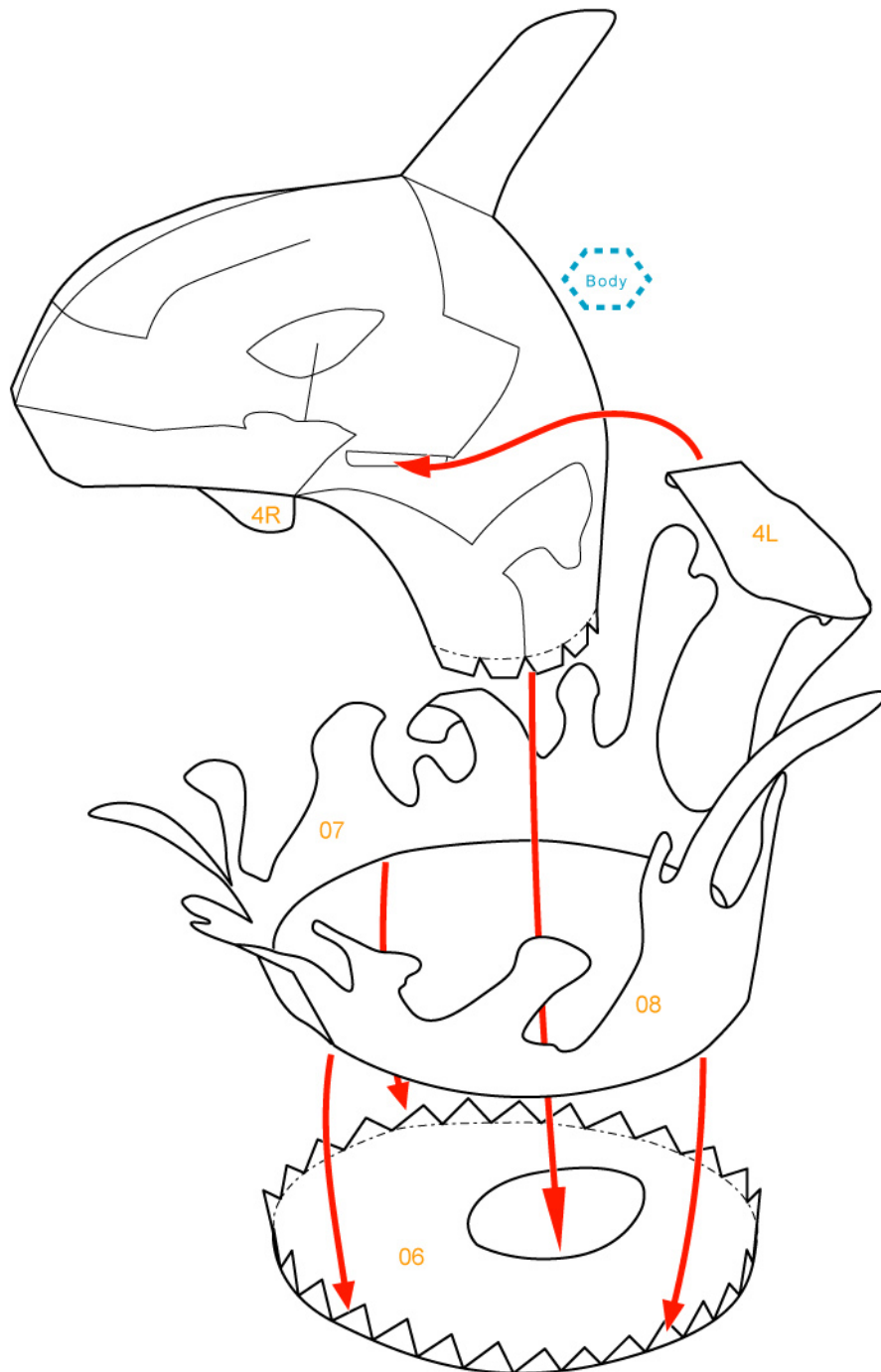
--- Inward fold

✗ Cut away parts

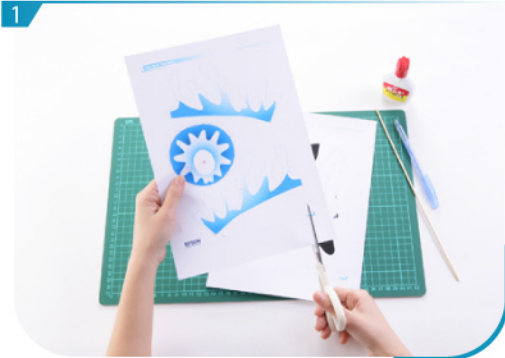
Same on the other side



Assembly Instructions



Basic steps



1 Separate all parts along the lines. Mark their identity on the back to avoid confusion.



2 Cut out parts which are marked with an 'x'.



3 Use a pen whose ink has dried out, or a tracer, to trace lines first.



Base

4 Assemble 06, 07 and 08 according to the assembly instructions.



5 Fold and glue 1L, 2L, 3L and 4L respectively.



Body

6 Glue 2L and 3L, and then glue 1L to the above parts.



7 Glue 4L and the above parts together to form left part of body.



8 The instructions for the right part of the body (1R, 2R, 3R and 4R) are the same as above.



Assemble the left and right parts of the body.



Finally, glue the base and body of killer whale.