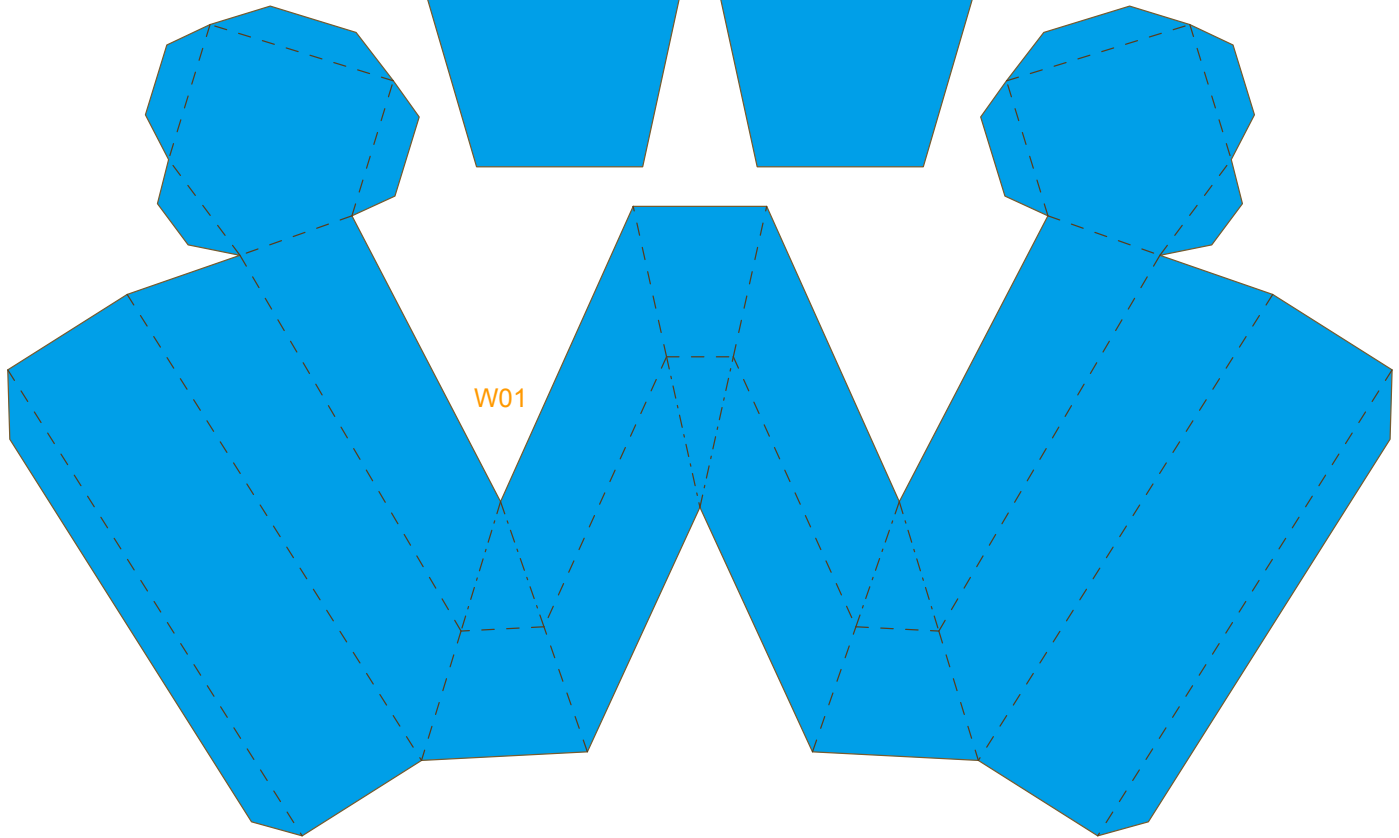


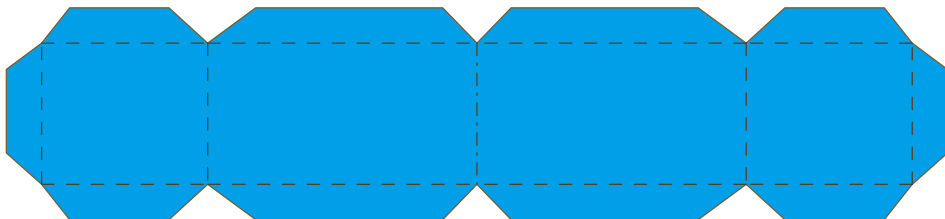
W02



W04




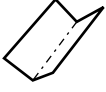
W01



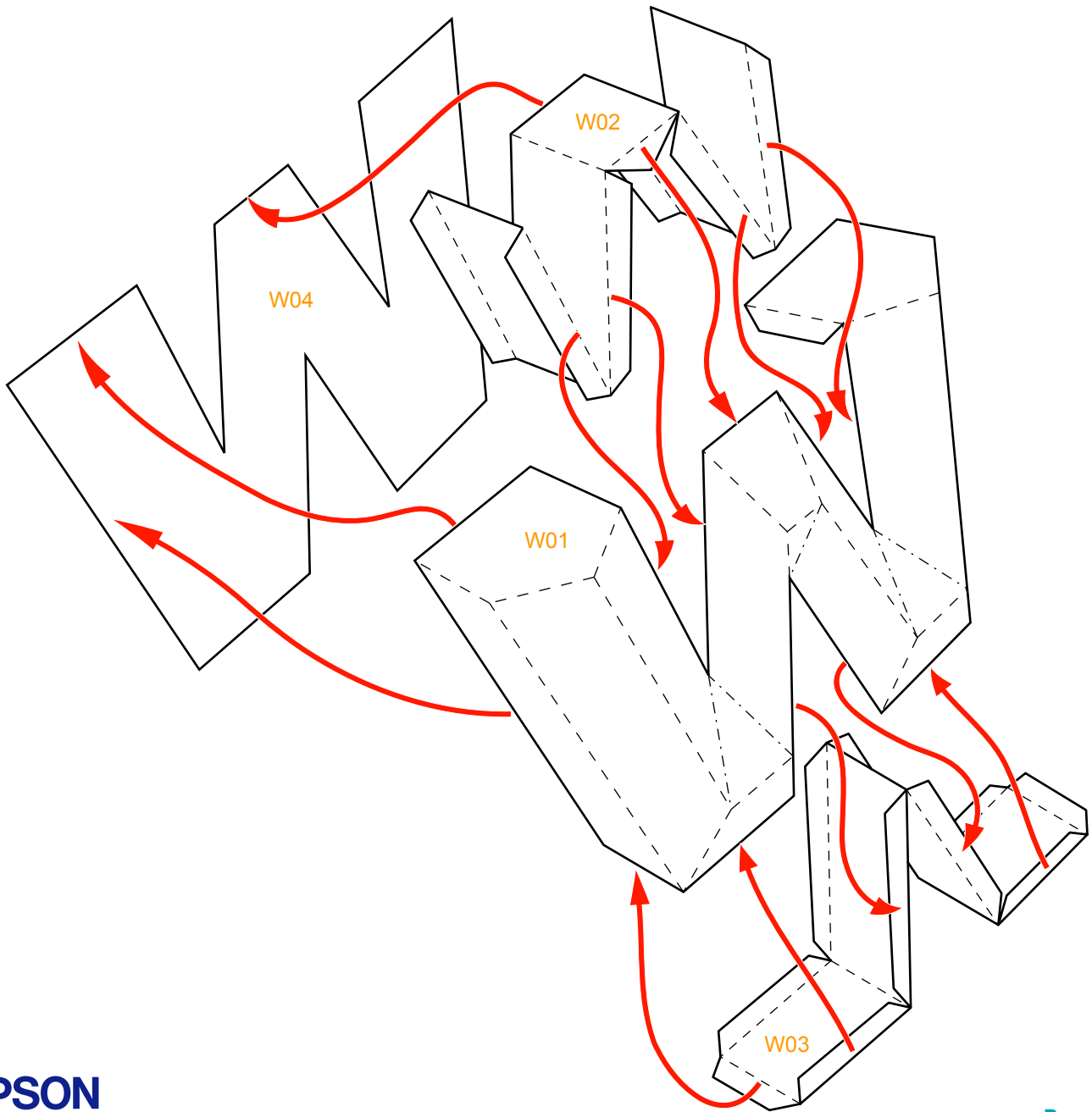
W03

Assembly Instructions

--- Outward fold 

--- Inward fold 

✗ Cut away parts



Instructions



1 Use a pen whose ink has dried out, or a tracer, to trace lines first.



2 Separate all parts along the lines. Mark their identity on the back to avoid confusion.



3 Fold and glue W01.



4 Glue W01, W02, W03 and W04 according to the assembly instruction, Letter "W" is now done.