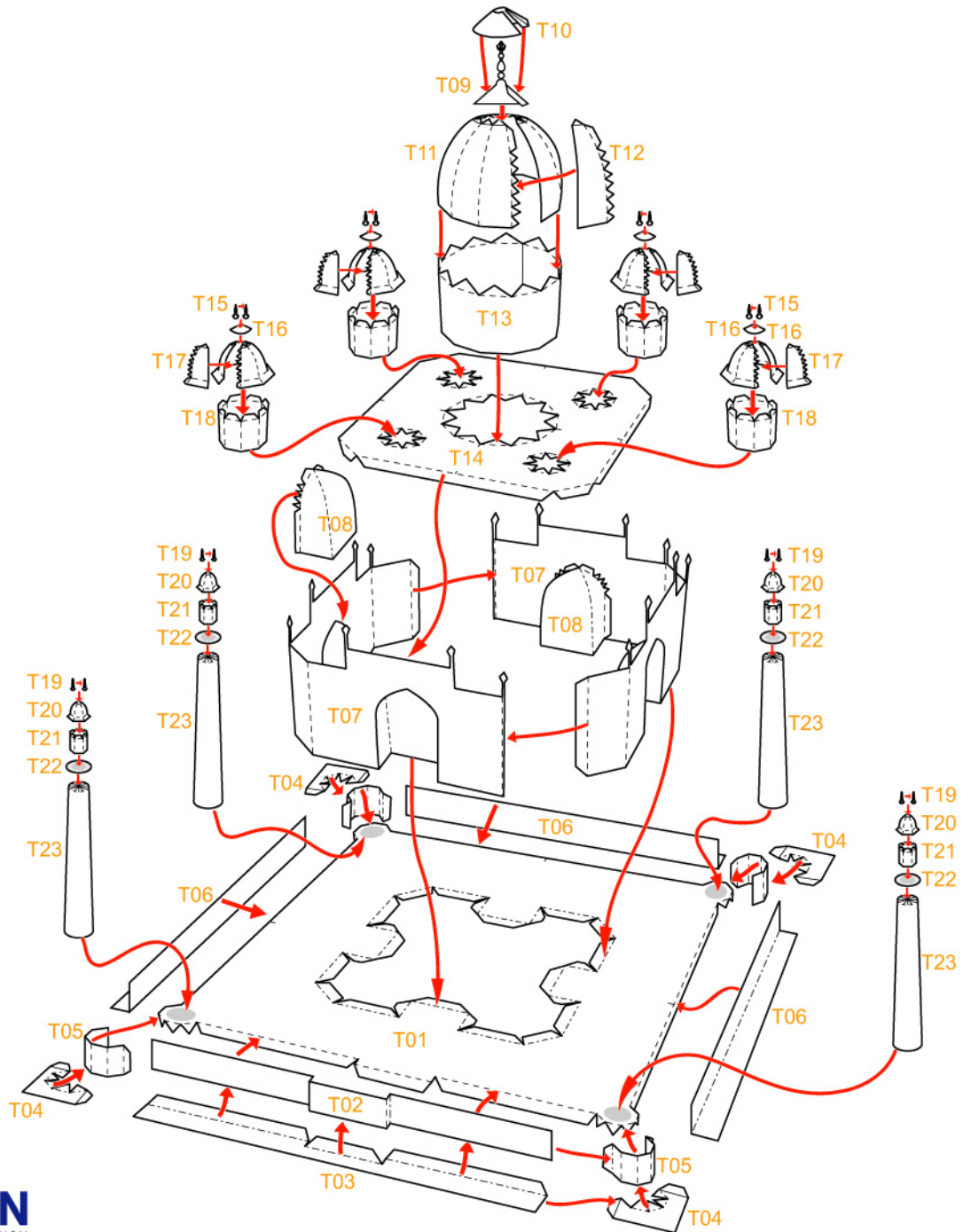
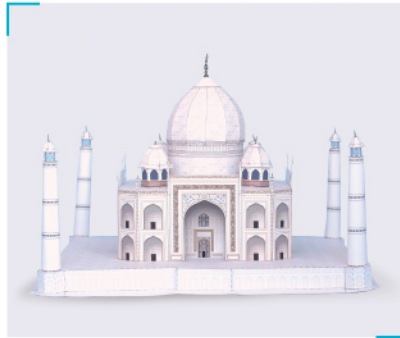


### Assembly Instructions

--- Outward fold

--- Inward fold

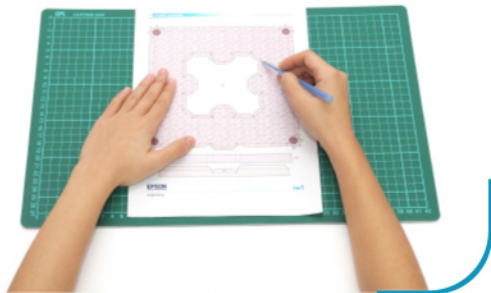
✗ Cut away parts





Instructions

1



Use a pen whose ink has dried out, or a tracer, to trace lines first.

2



Separate all parts along the lines. Mark their identity on the back to avoid confusion.

3



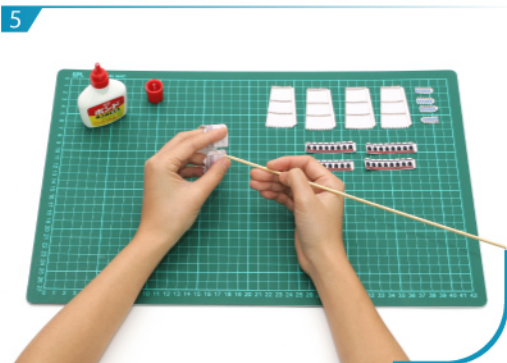
Cut out parts which are marked with an 'x'.

4



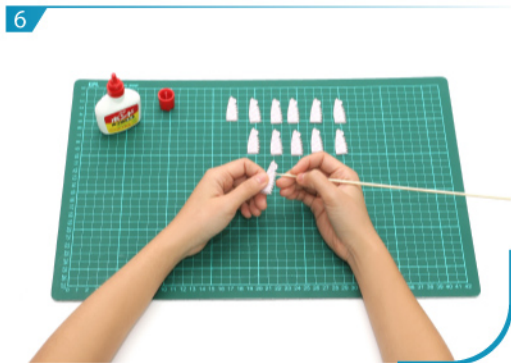
Use a cylindrical pen to roll T13 and T23.

5



Fold and glue T13, T18, T21 and T23.

6



Glue T11 and T12.

7



Fold and glue T15, T16, T17, T19 and T20.

8



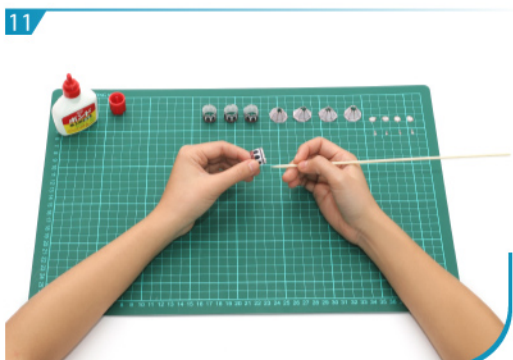
Glue T01 to T06 according to the assembly instructions to form the base of Taj Mahal.



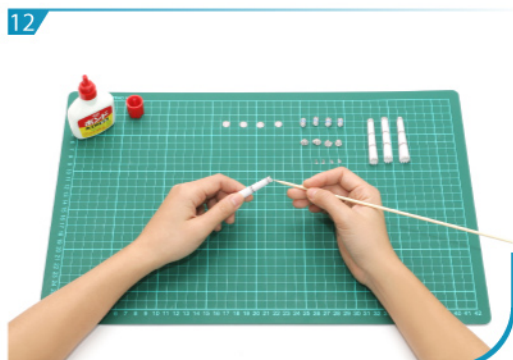
Glue T07 and T08 according to the assembly instructions. Then glue T14 to form the main building.



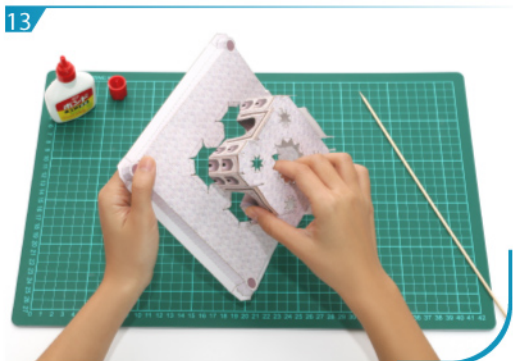
Glue T09, T10, T11 and T13.



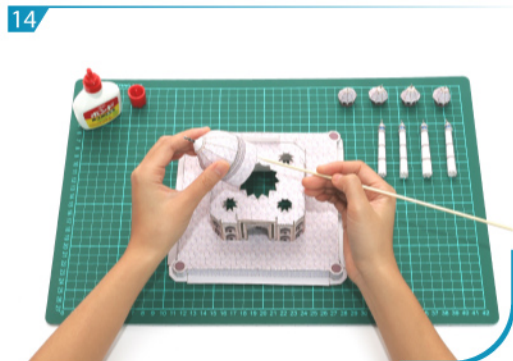
Glue T15, T16, T17 and T18.



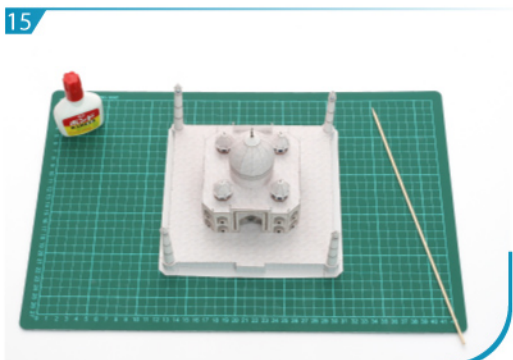
Glue T19, T20, T21, T22 and T23.



Glue the main building and the base.



Glue T13, T18 and T23 onto the main building.



Taj Mahal in India is now done!