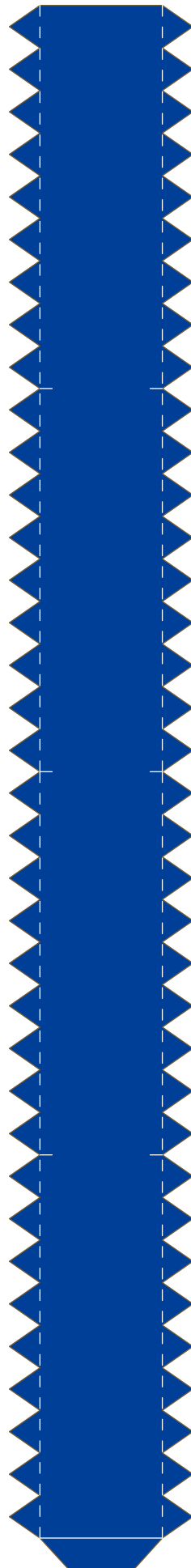
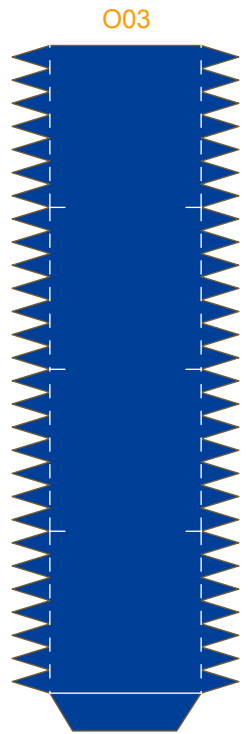


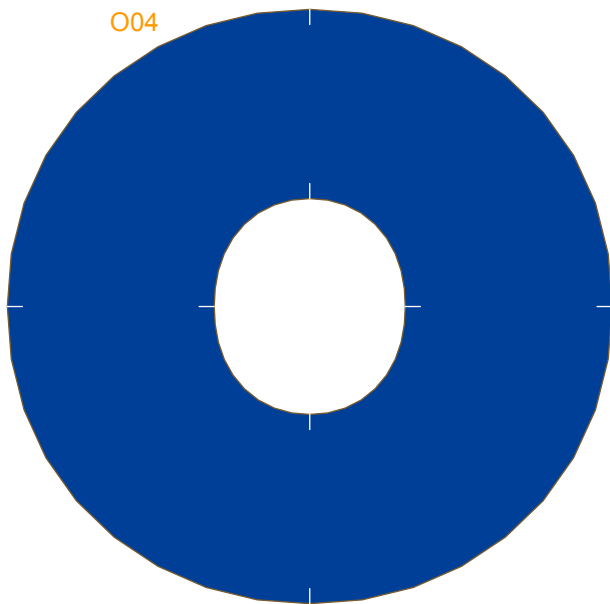
O01



O02



O03



O04



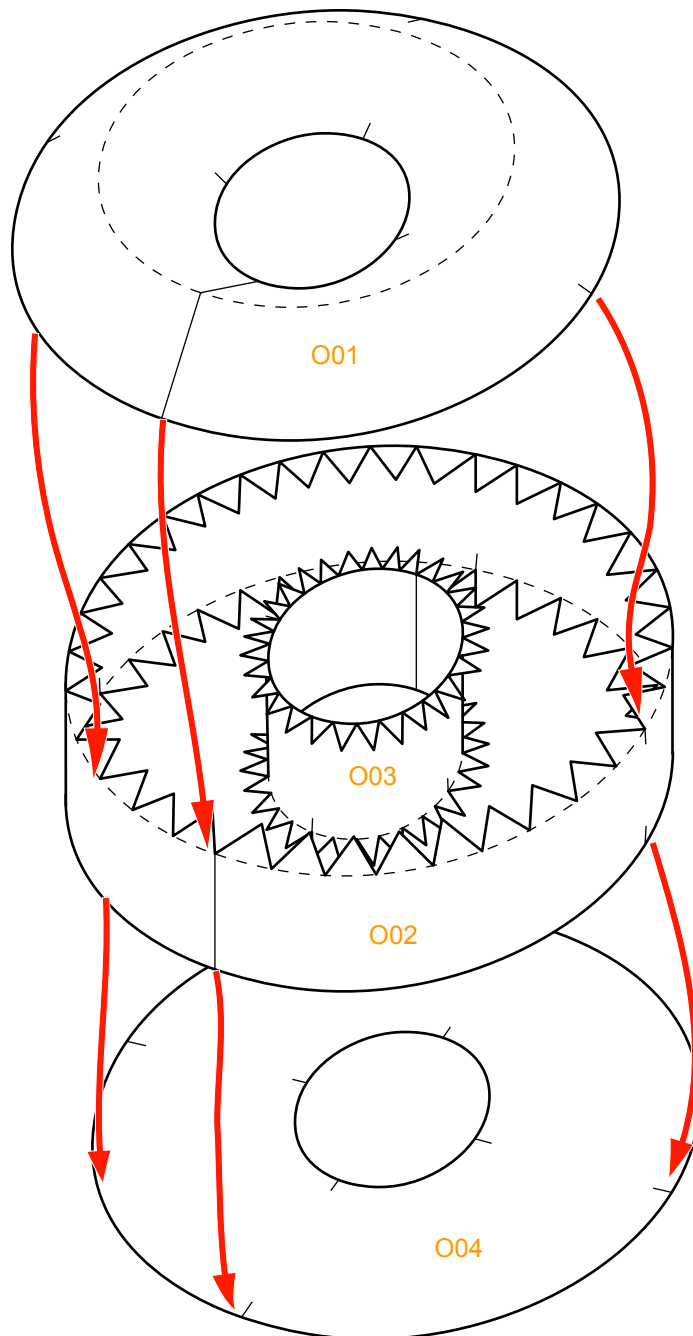
### Assembly Instructions



--- Outward fold

--- Inward fold

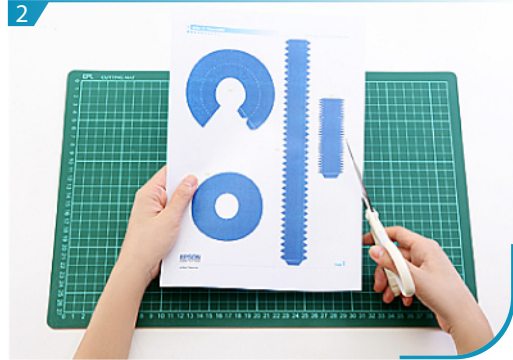
✗ Cut away parts



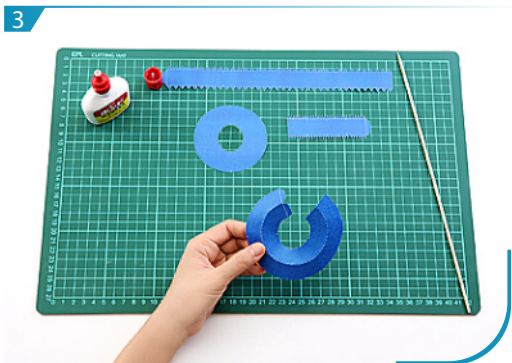
Instructions



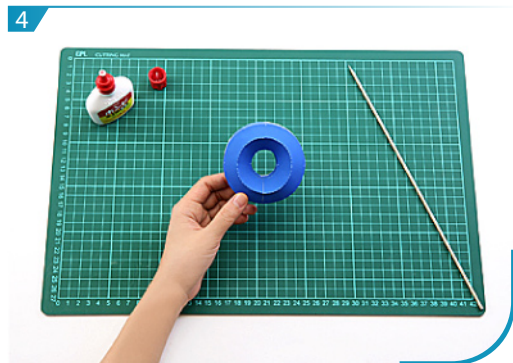
1 Use a pen whose ink has dried out, or a tracer, to trace lines first.



2 Separate all parts along the lines. Mark their identity on the back to avoid confusion.



3 Fold and glue O01.



4 Glue O01, O02, O03 and O04 according to the assembly instruction, Letter "O" is now done.