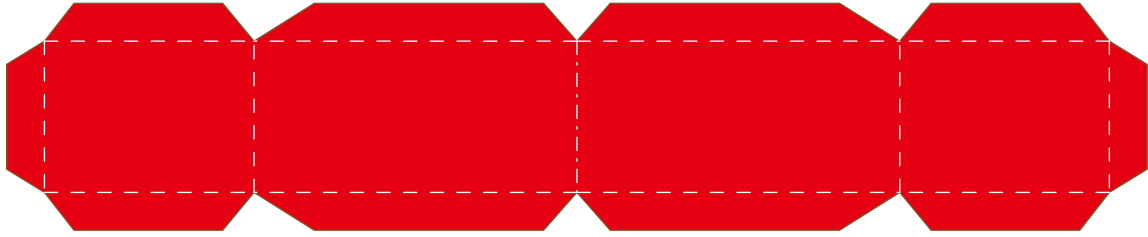
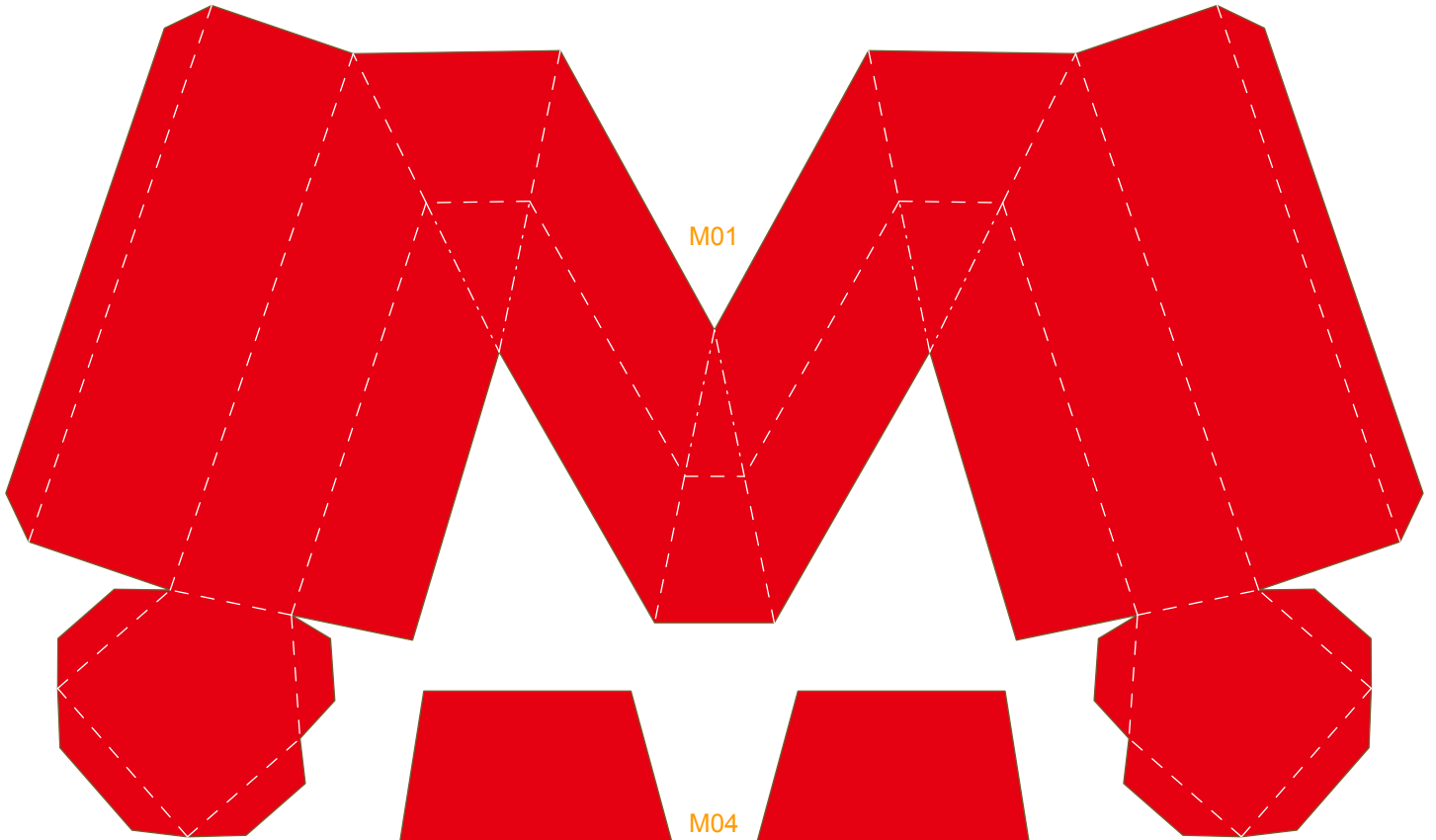




M02



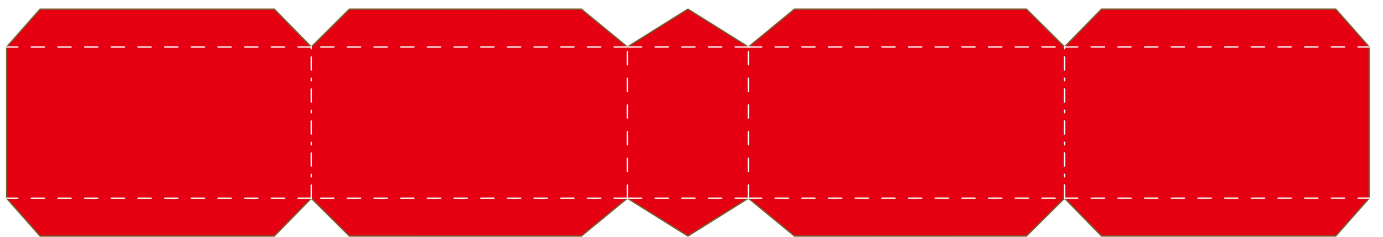
M01



M04



M03

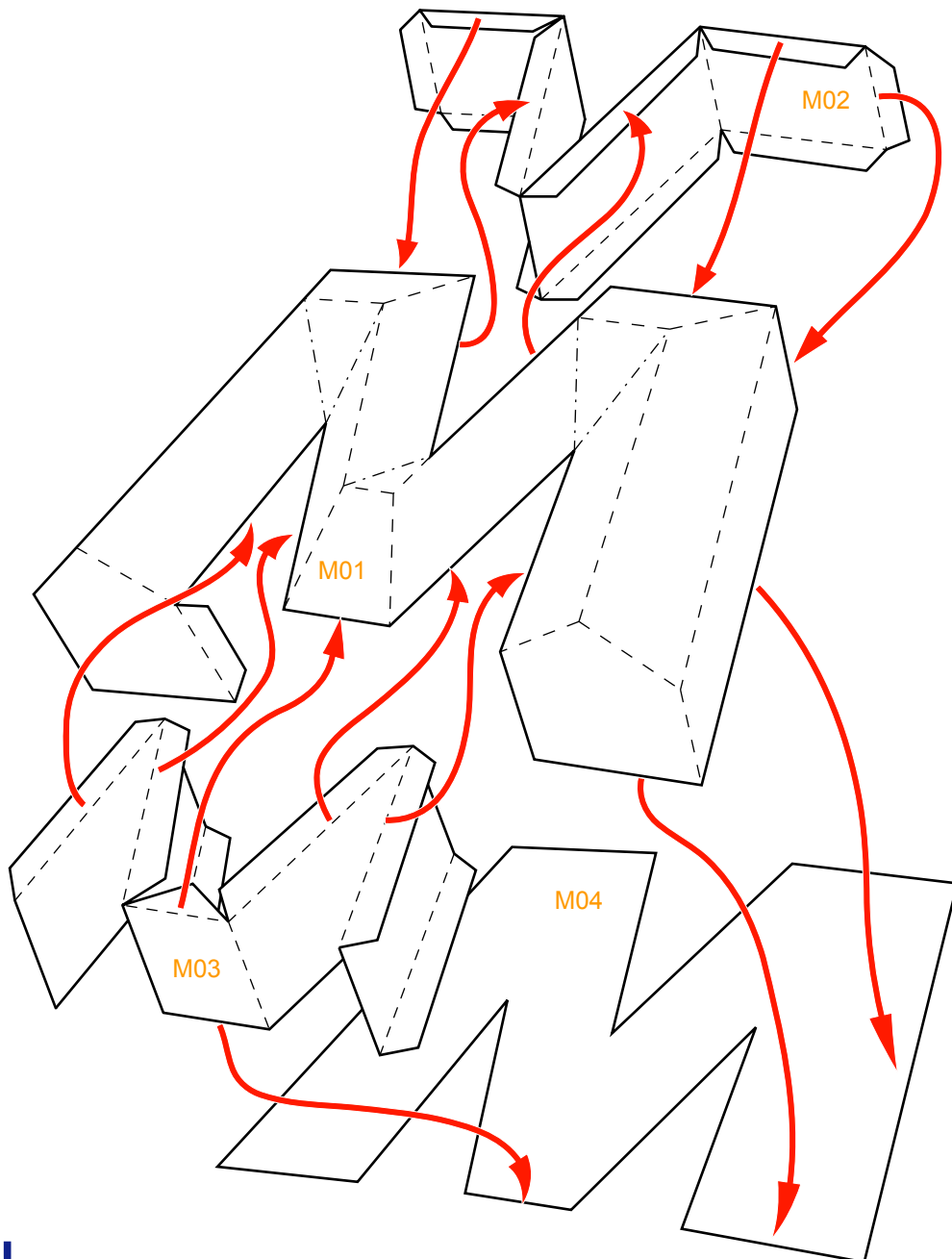
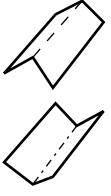


### Assembly Instructions

--- Outward fold

--- Inward fold

✗ Cut away parts



Instructions



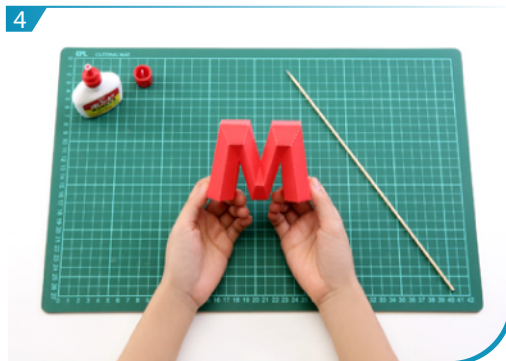
1 Use a pen whose ink has dried out, or a tracer, to trace lines first.



2 Separate all parts along the lines. Mark their identity on the back to avoid confusion.



3 Fold and glue M01.



4 Glue M01, M02, M03 and M04 according to the assembly instruction, Letter "M" is now done.