



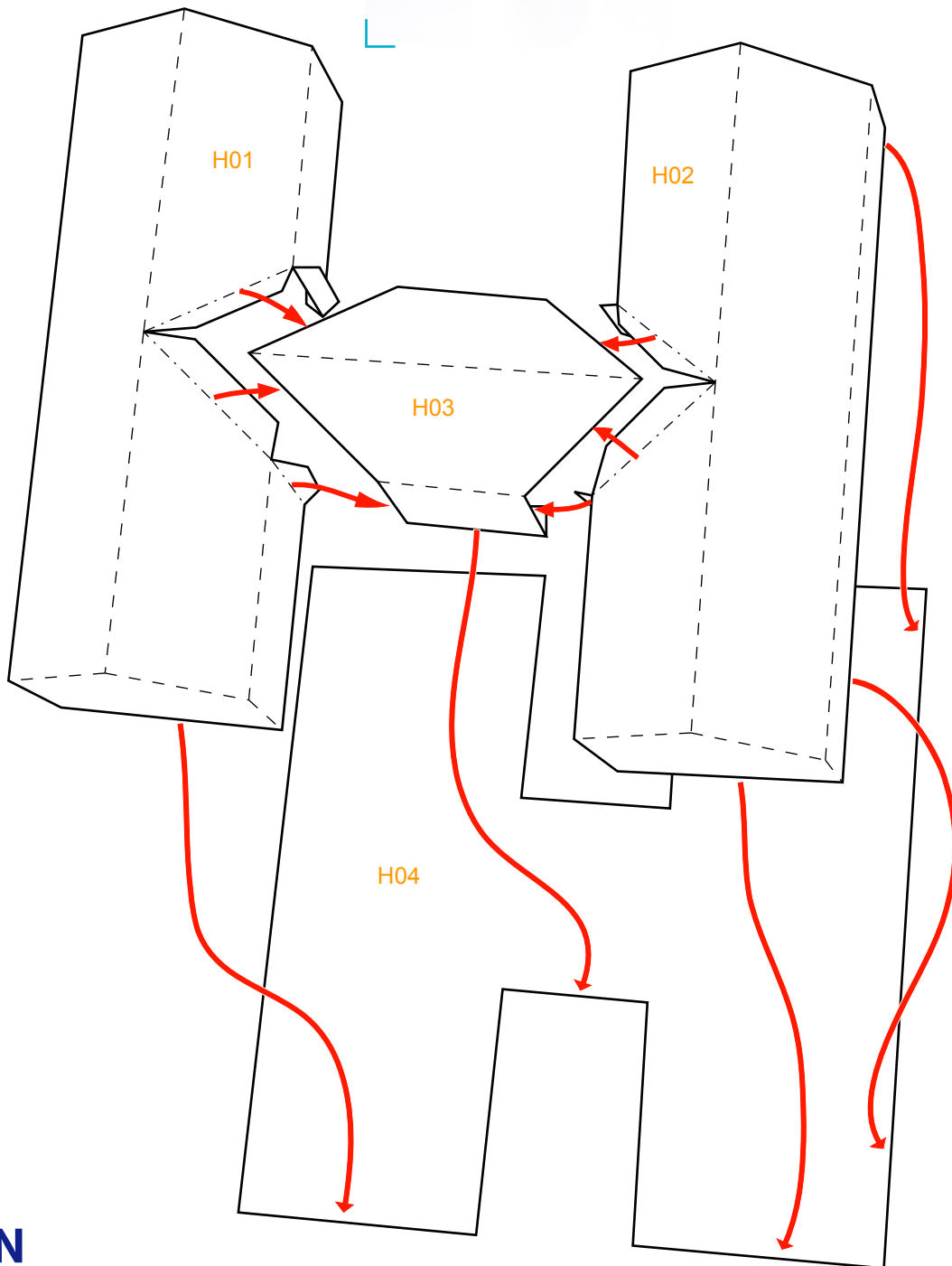
Assembly Instructions



--- Outward fold

--- Inward fold

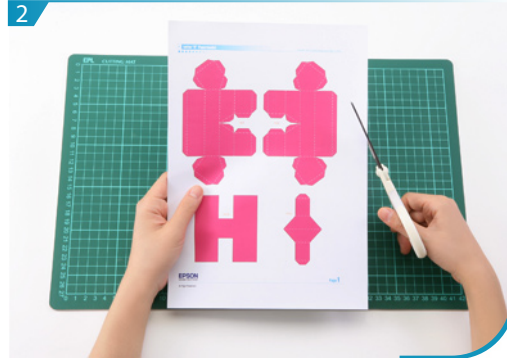
✗ Cut away parts



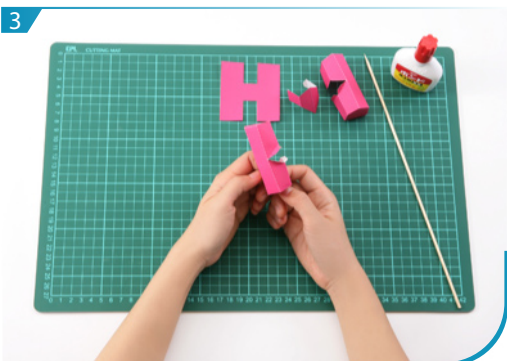
Instructions



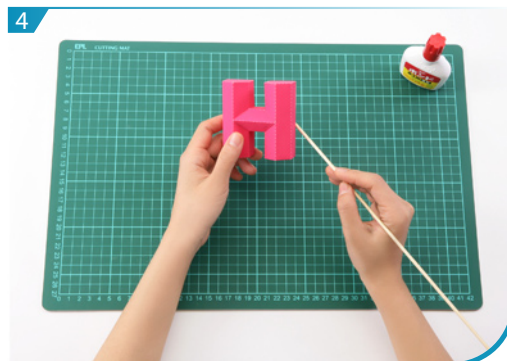
1 Use a pen whose ink has dried out, or a tracer, to trace lines first.



2 Separate all parts along the lines. Mark their identity on the back to avoid confusion.



3 Fold and glue H01 and H02 respectively.



4 Glue H01, H02, H03 and H04 according to the assembly instruction, Letter "H" is now done.