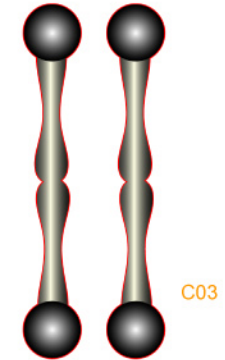
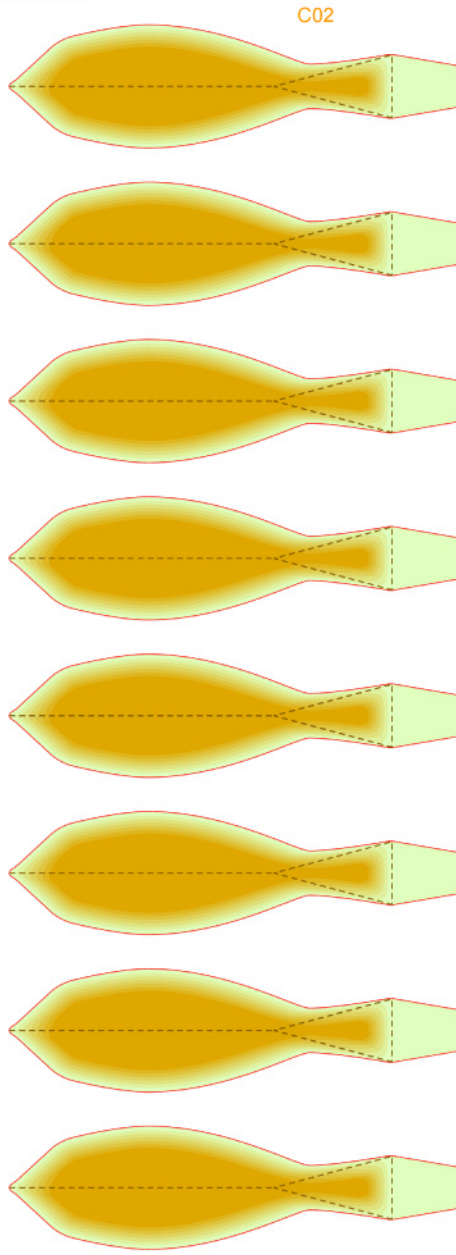
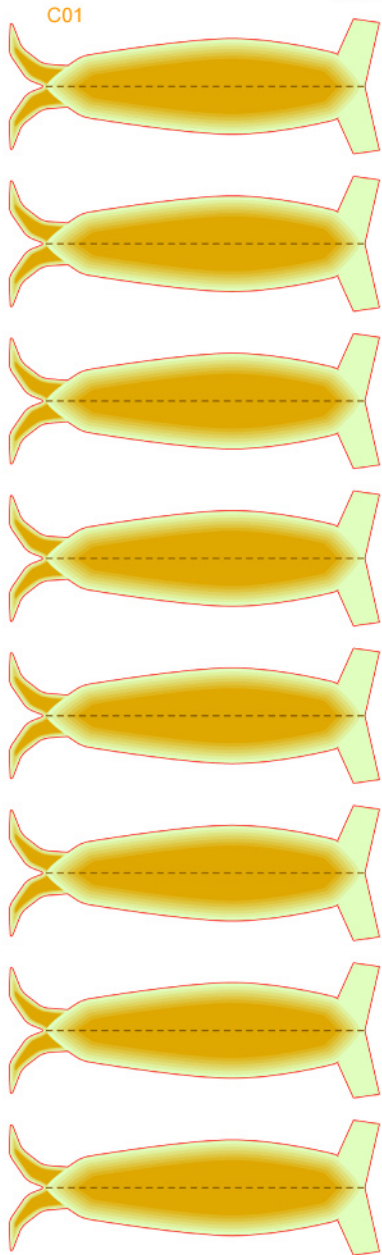
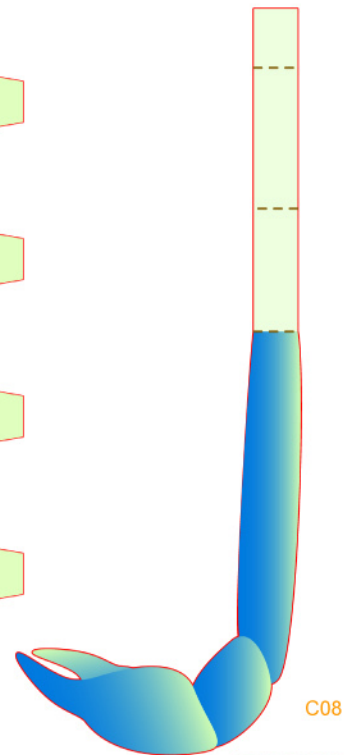




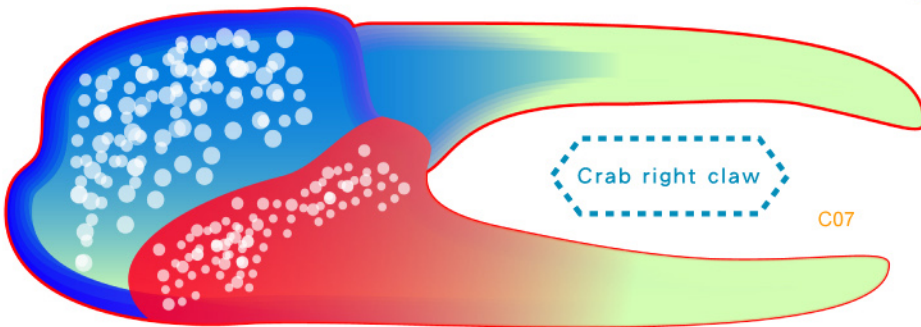
Crab legs (all)



Crab eyes



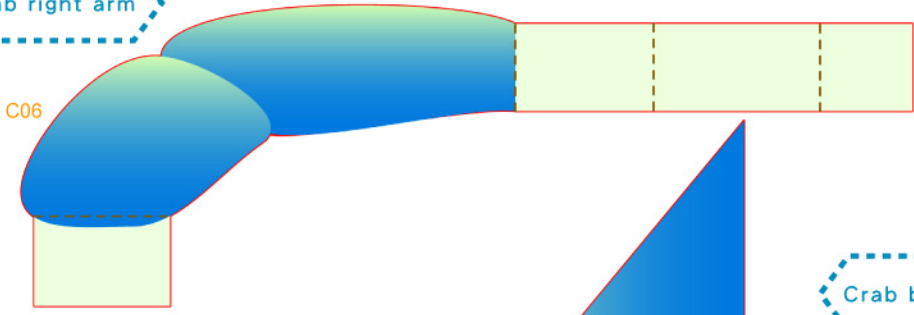
Crab left arm



Crab right claw

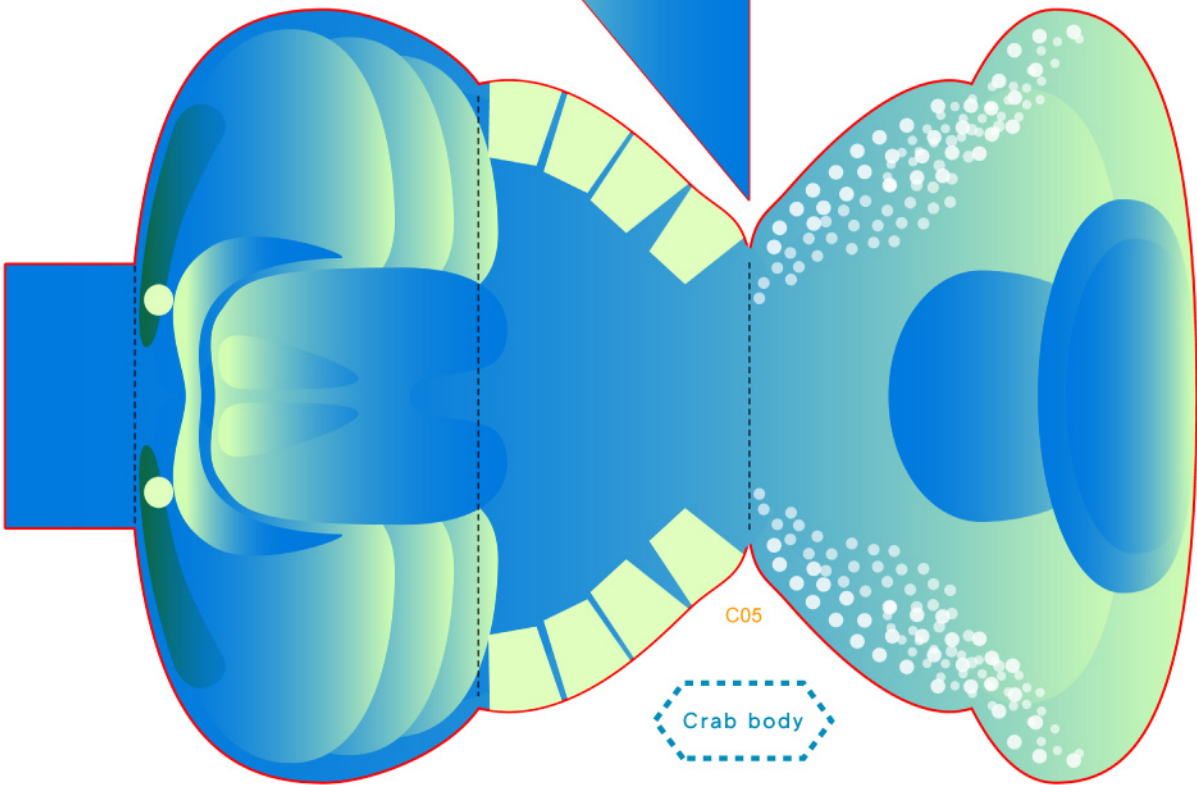
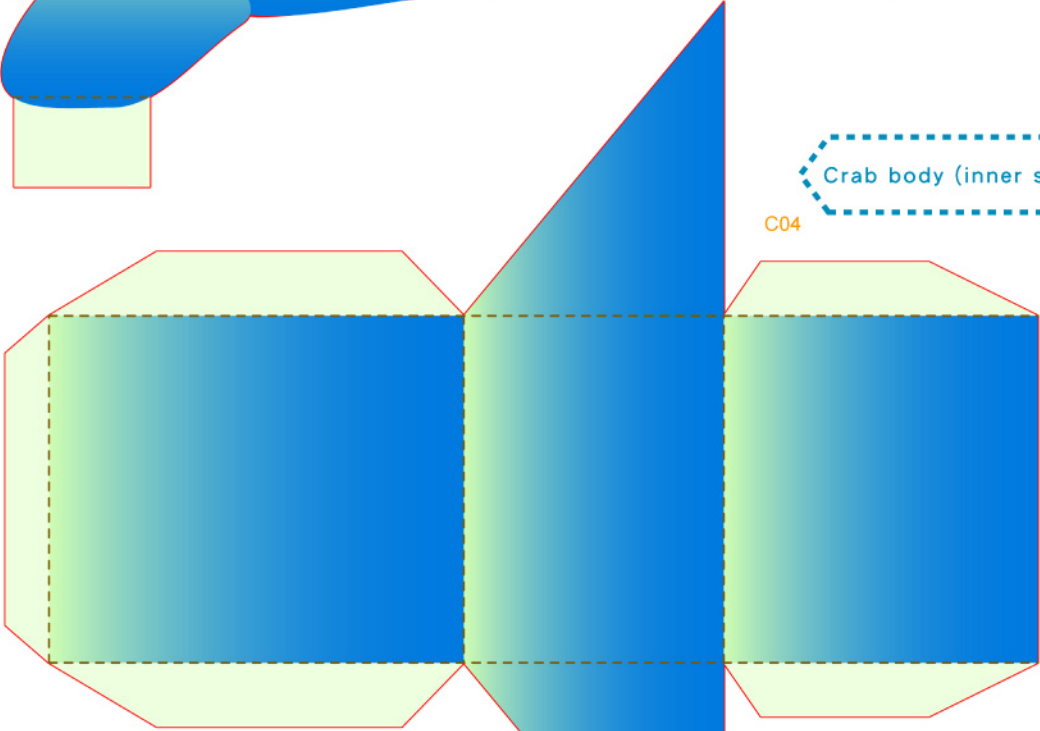


Crab right arm



Crab body (inner side)

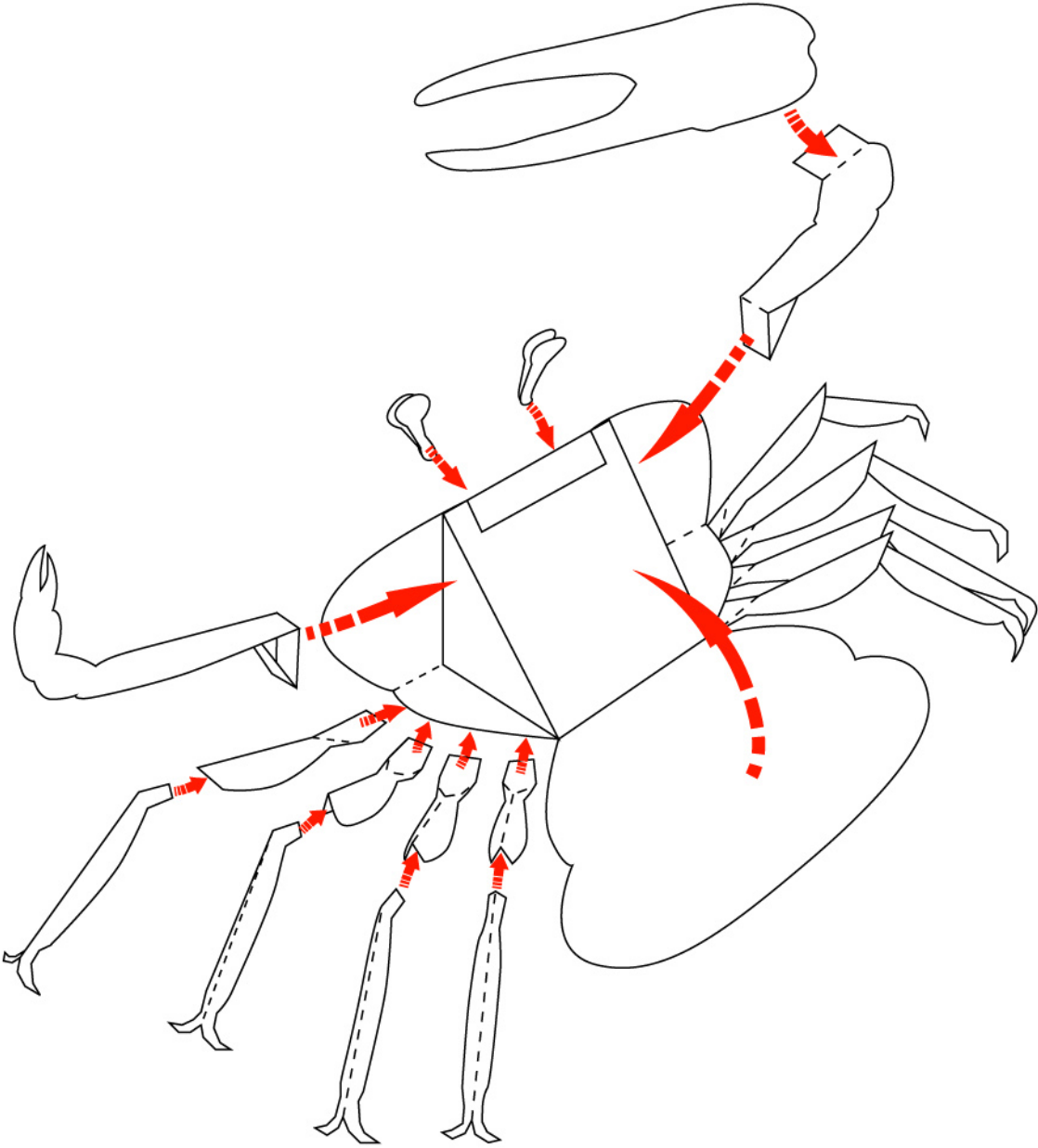
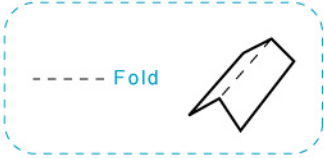
C04



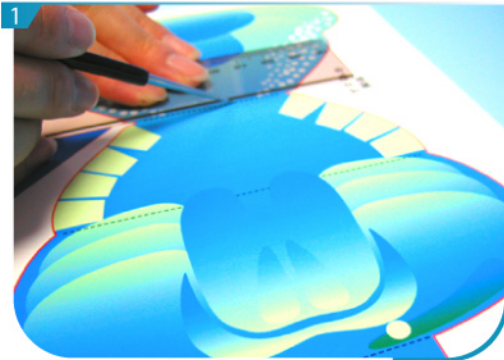
Crab body



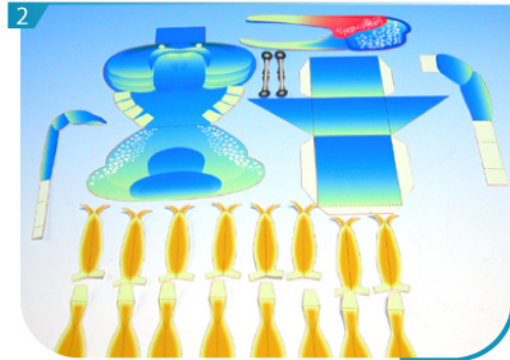
Assembly Instructions



Basic steps

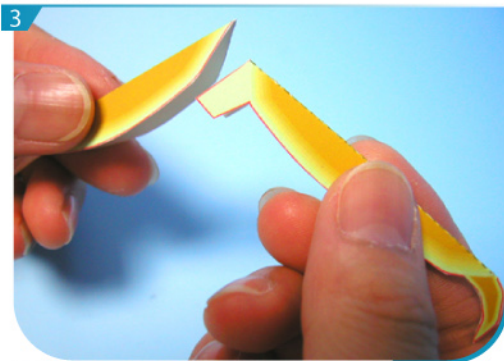


Use a pen whose ink has dried out, or a tracer, to trace lines first.

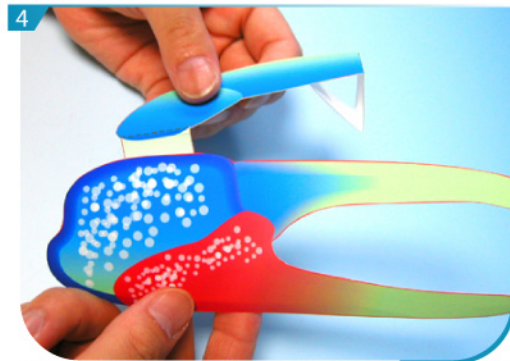


Separate all parts along the lines. Mark their identity on the back to avoid confusion.

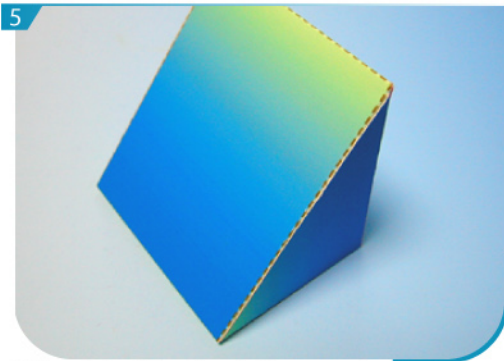
Instructions



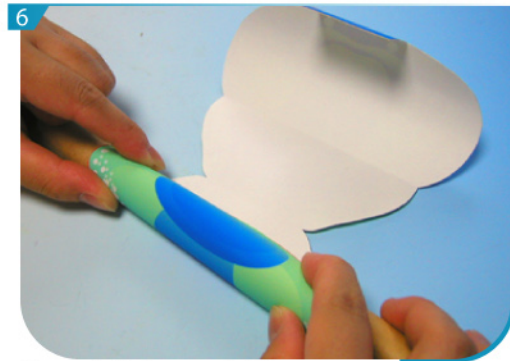
Fold and glue all C01 and C02 to form legs.



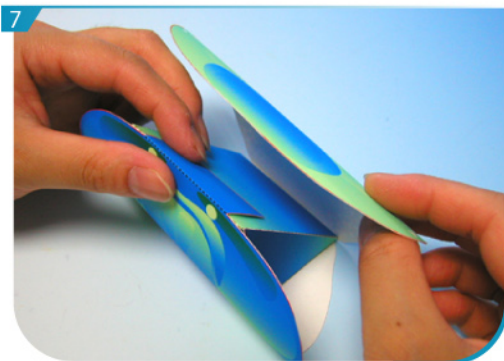
Fold and glue C06 and C07 according to the assembly instructions to form claw.



Fold and glue C04 to form the inner part of crab body.



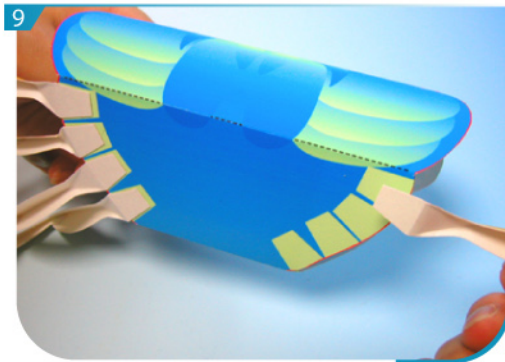
Use a cylindrical pen to roll C05.



Fold and glue C04 and C05 according to the assembly instructions to form body.



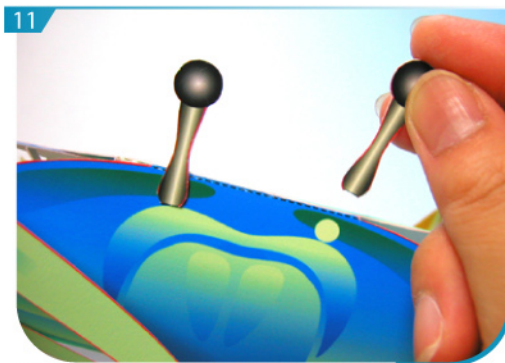
Fold and glue C03 to form a pair of eyes.



9 Glue the legs to the body of crab.



10 Glue claw and arm C07 to the body of crab according to the assembly instructions.



11 Finally, glue the eyes C03 according to the marked positions. The Crab is now done.