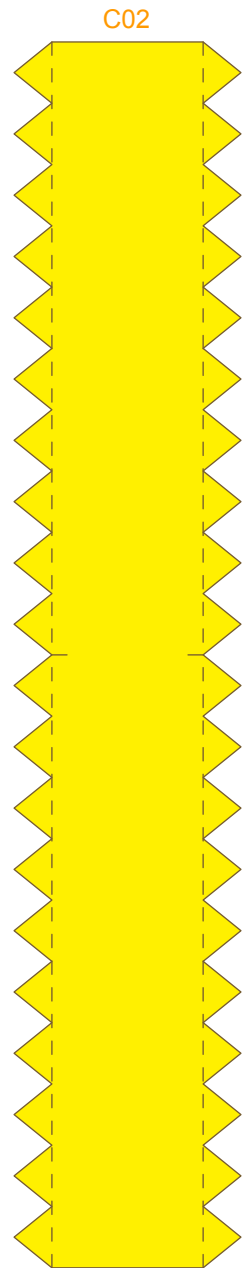
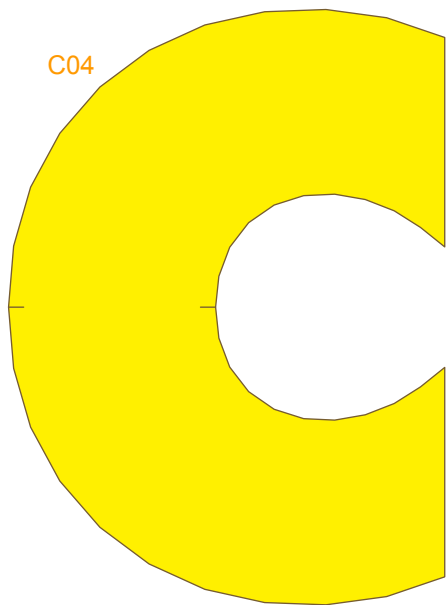


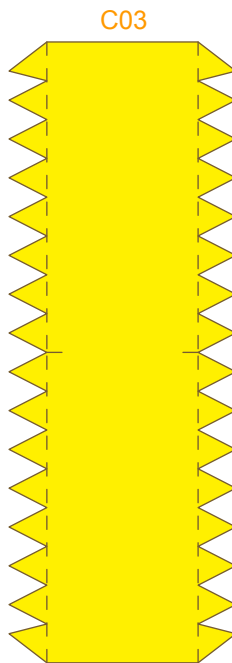
C01



C02



C04



C03



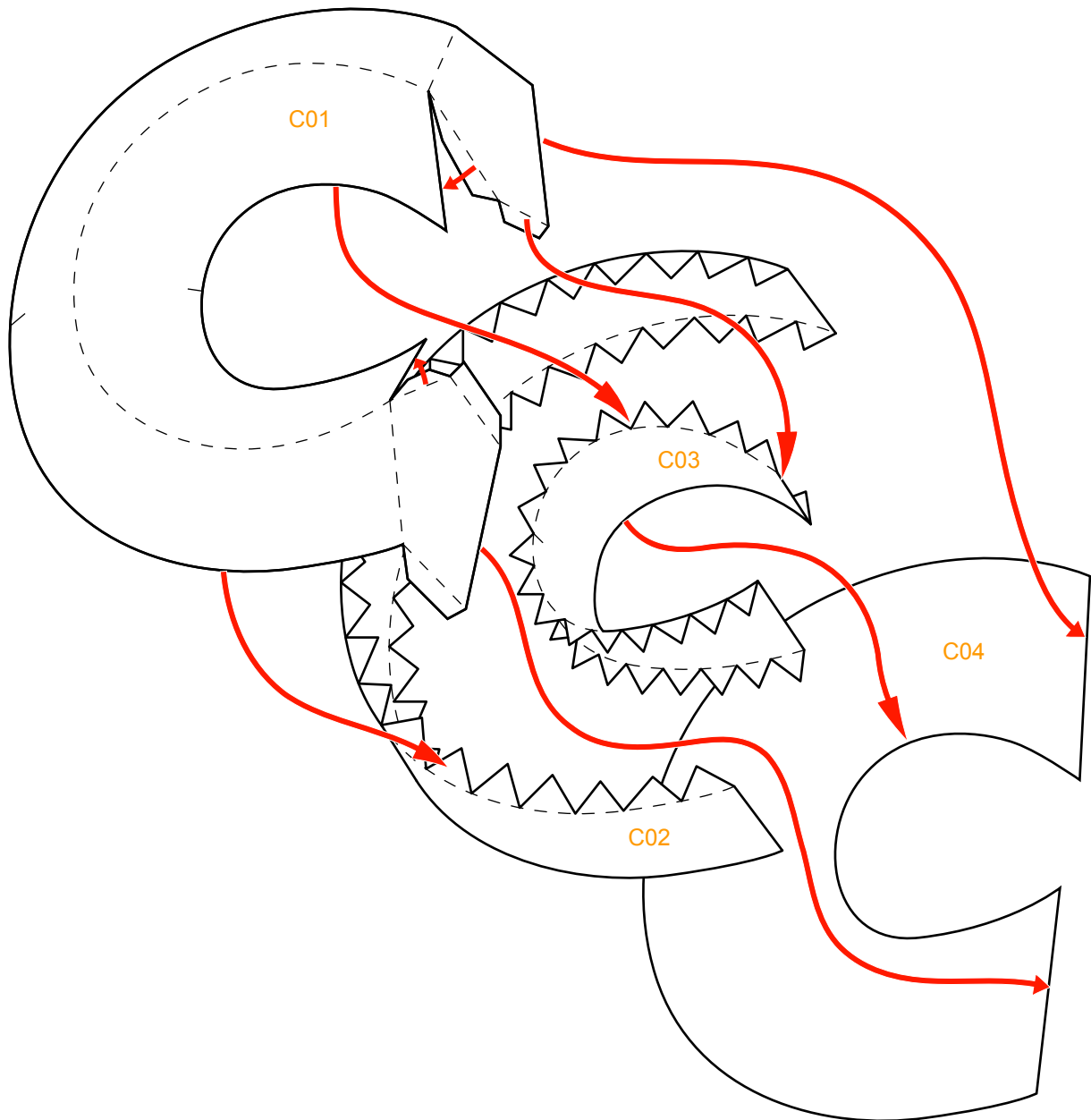
Assembly Instructions



--- Outward fold

--- Inward fold

✗ Cut away parts



Instructions



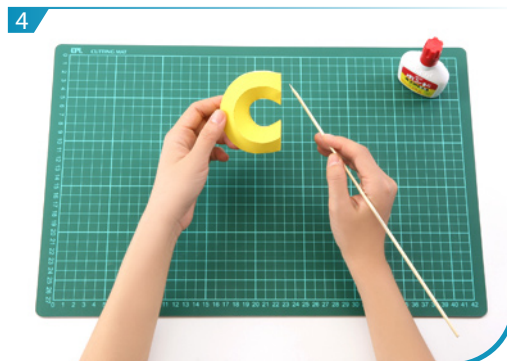
1 Use a pen whose ink has dried out, or a tracer, to trace lines first.



2 Separate all parts along the lines. Mark their identity on the back to avoid confusion.



3 Fold and glue C01.



4 Glue C01 to C04 according to the assembly instruction, Letter "C" is now done.