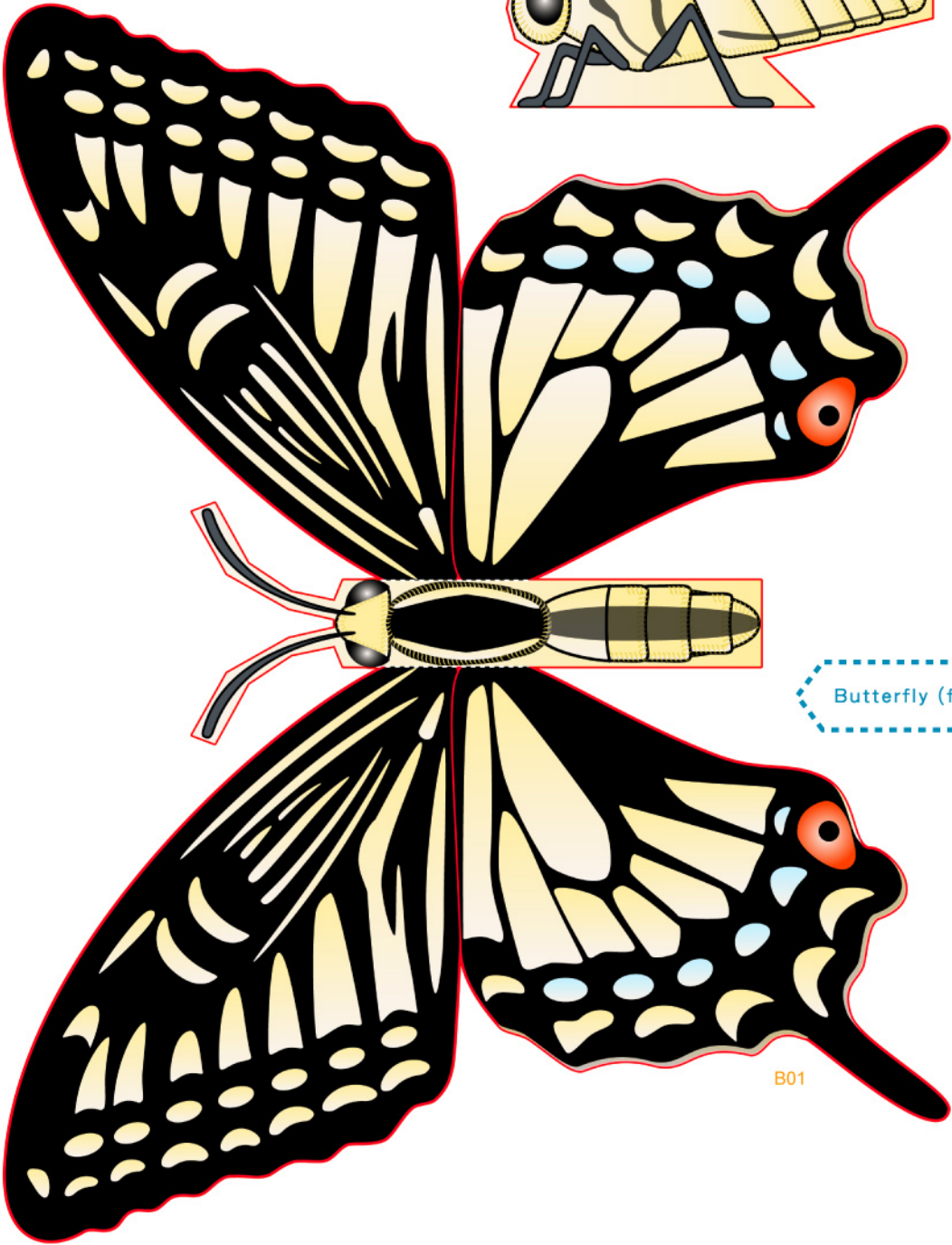
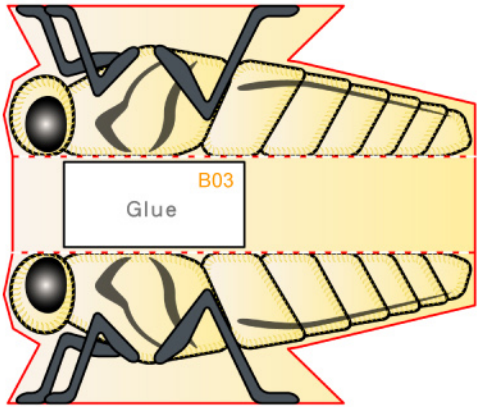
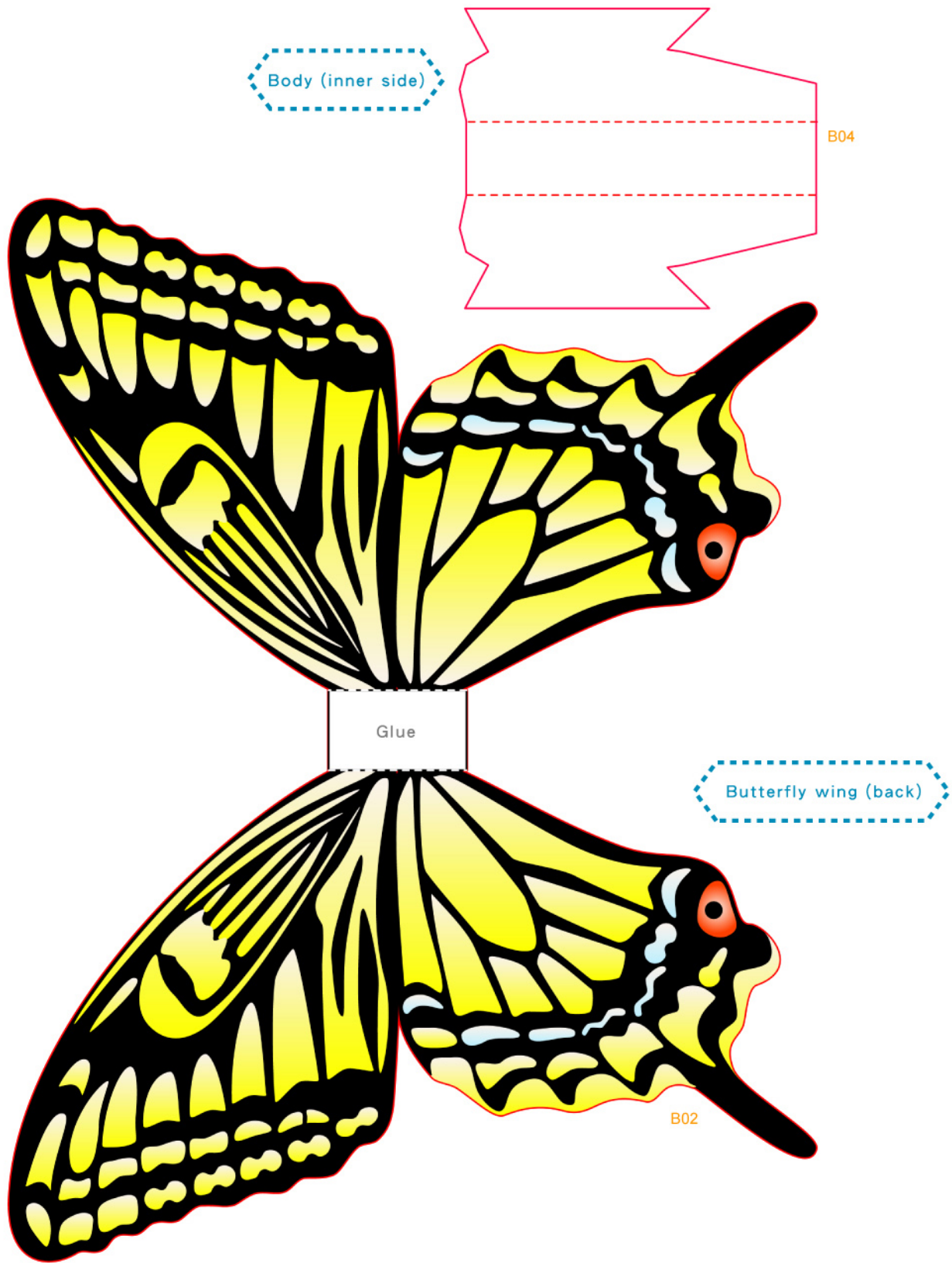




Body

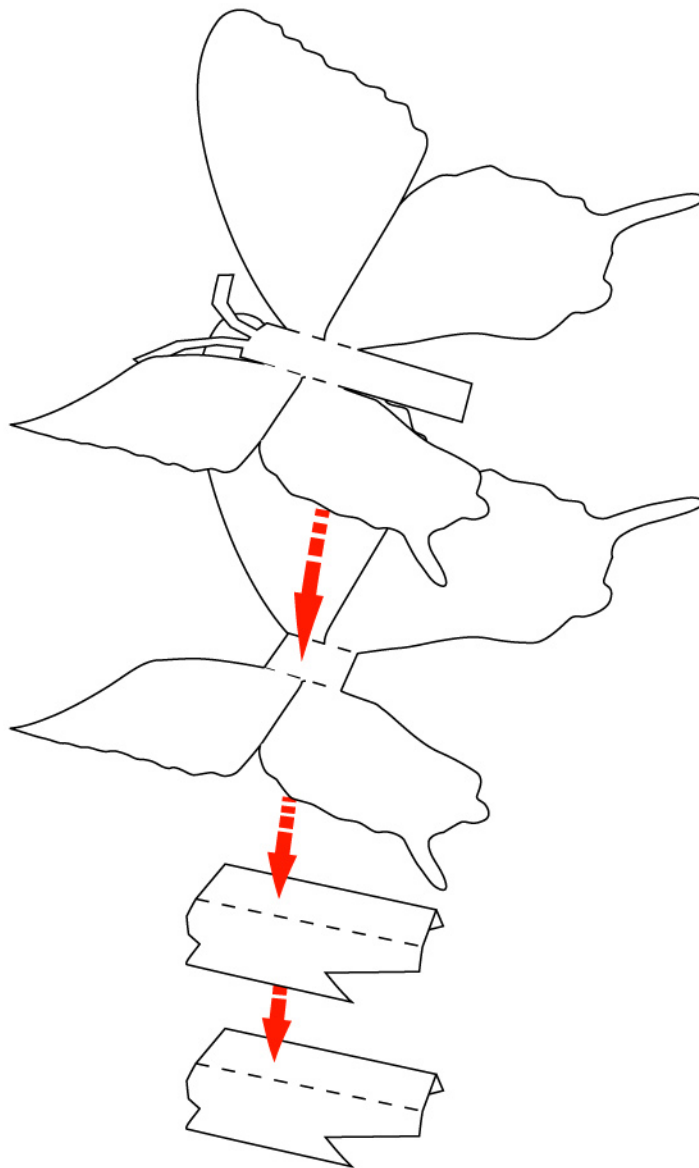
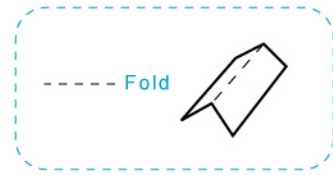


Butterfly (front)



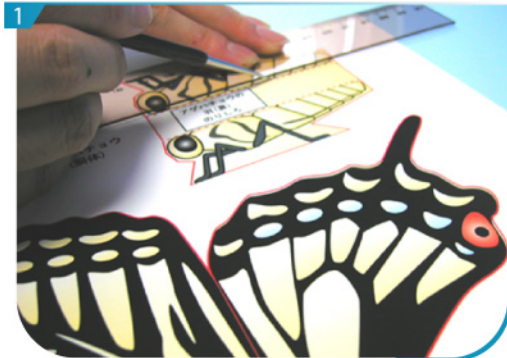


Assembly Instructions





Basic steps



Use a pen whose ink has dried out, or a tracer, to trace lines first.

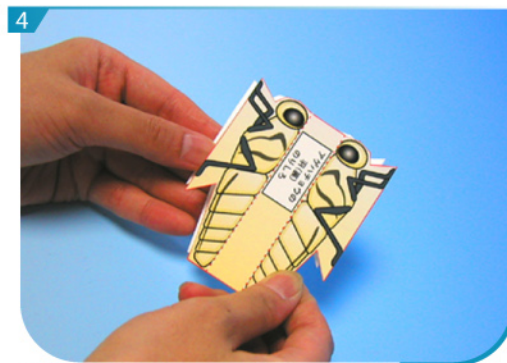


Separate all parts along the lines. Mark their identity on the back to avoid confusion.

Instructions



Fold and glue B01 and B02 to form a pair of wings.



Fold and glue B03 and B04 to form body of butterfly.



Finally, glue the above parts together according to the marked positions, and a colorful butterfly is ready to fly.