

C01

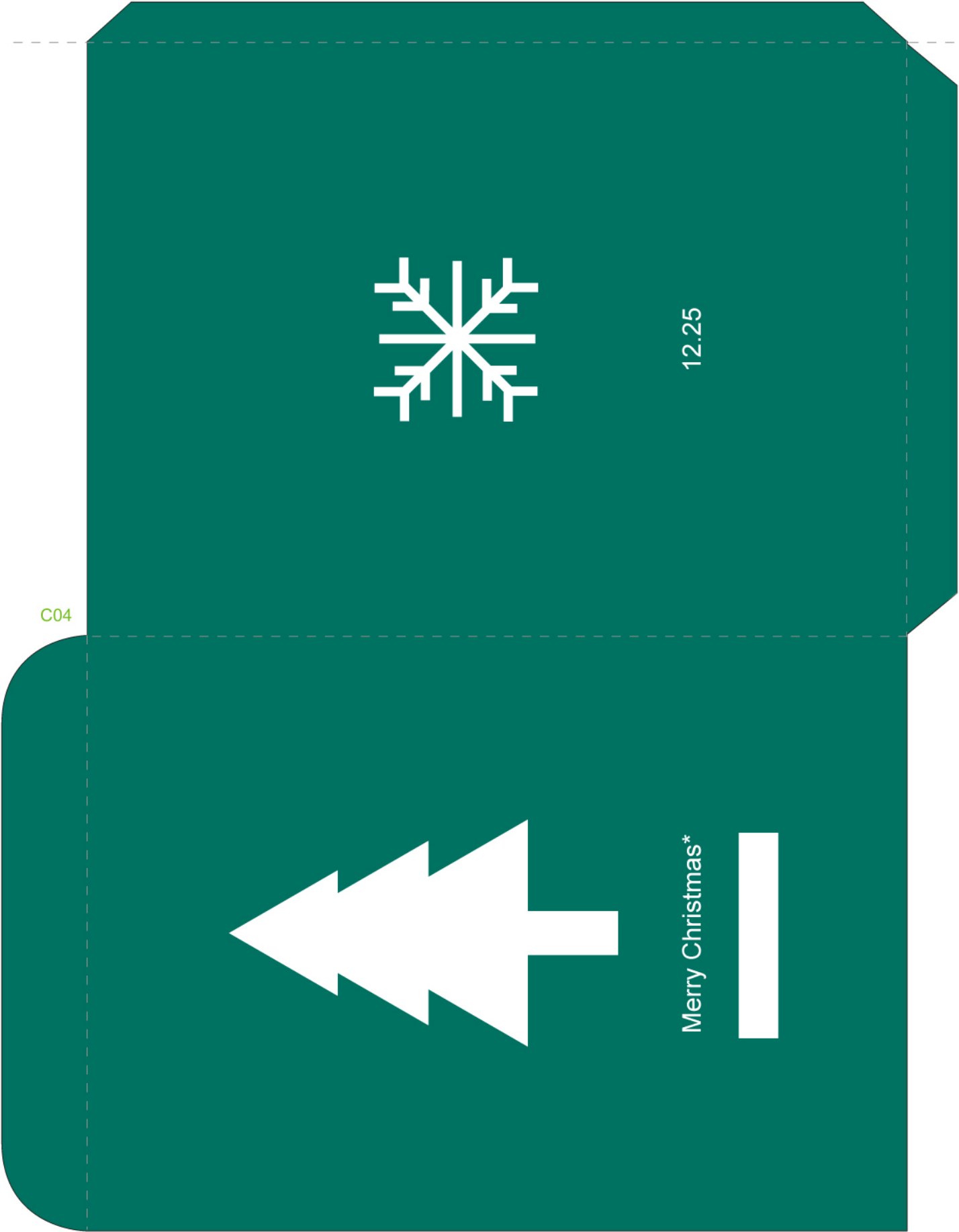




C02



C03



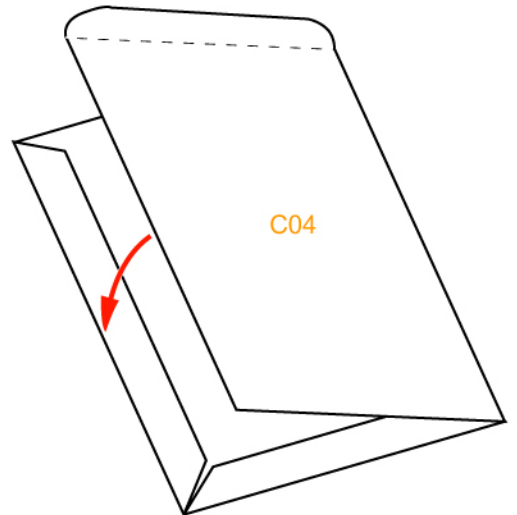
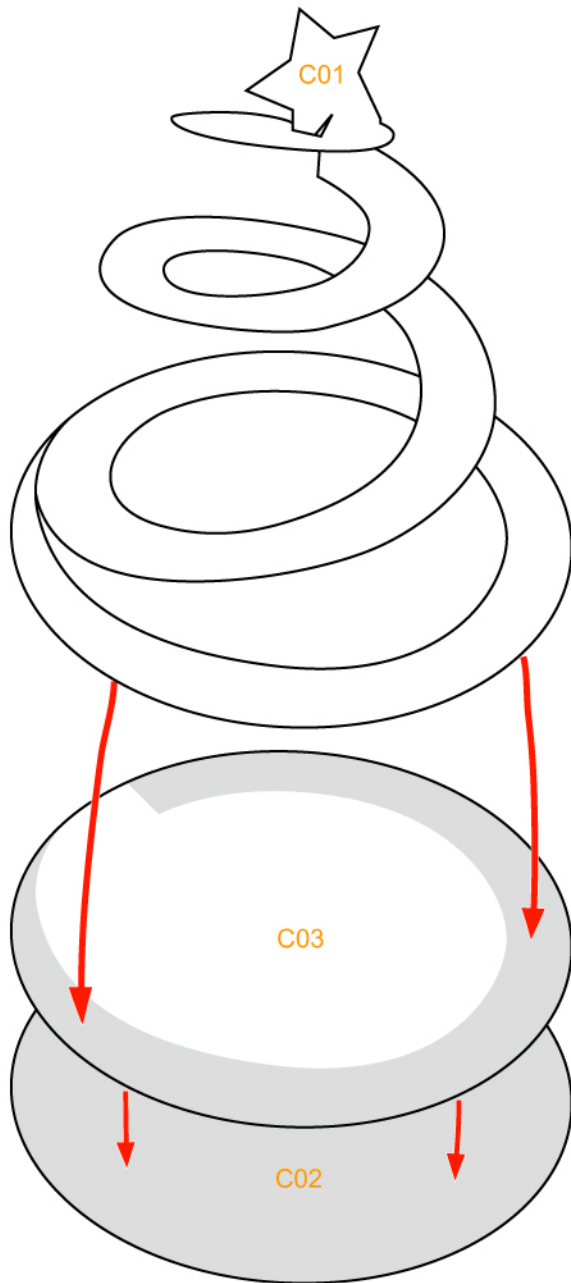


Assembly Instructions

--- Outward fold

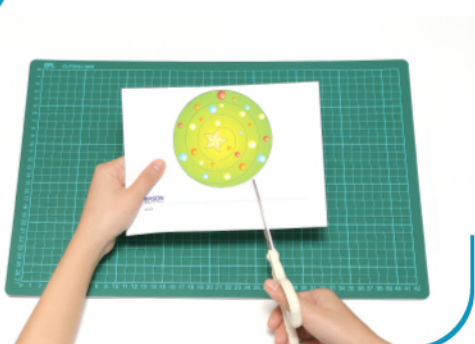
--- Inward fold

✗ Cut away parts



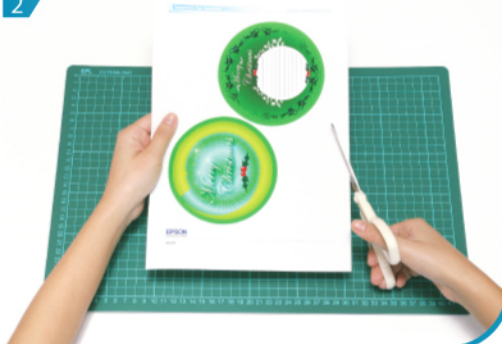
Instructions

1



Fold and glue C01. Cut along all the black lines on C01 and then make a fine cut.

2



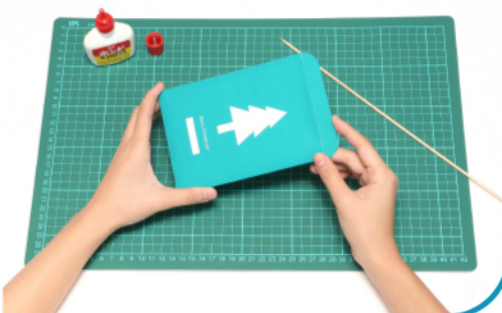
Separate all parts along the lines. Mark their identity on the back to avoid confusion.

3



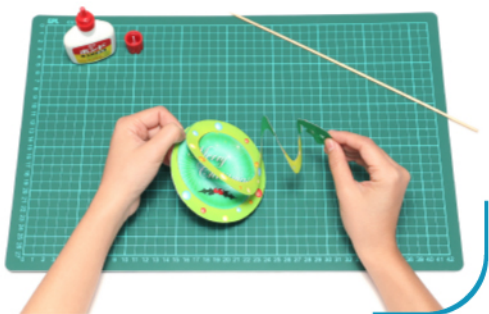
Glue C02 and C03.

4



Fold and glue C04 to form an envelope.

5



Glue C01 to C03 according to the assembly instructions and the beautiful Christmas is now done!