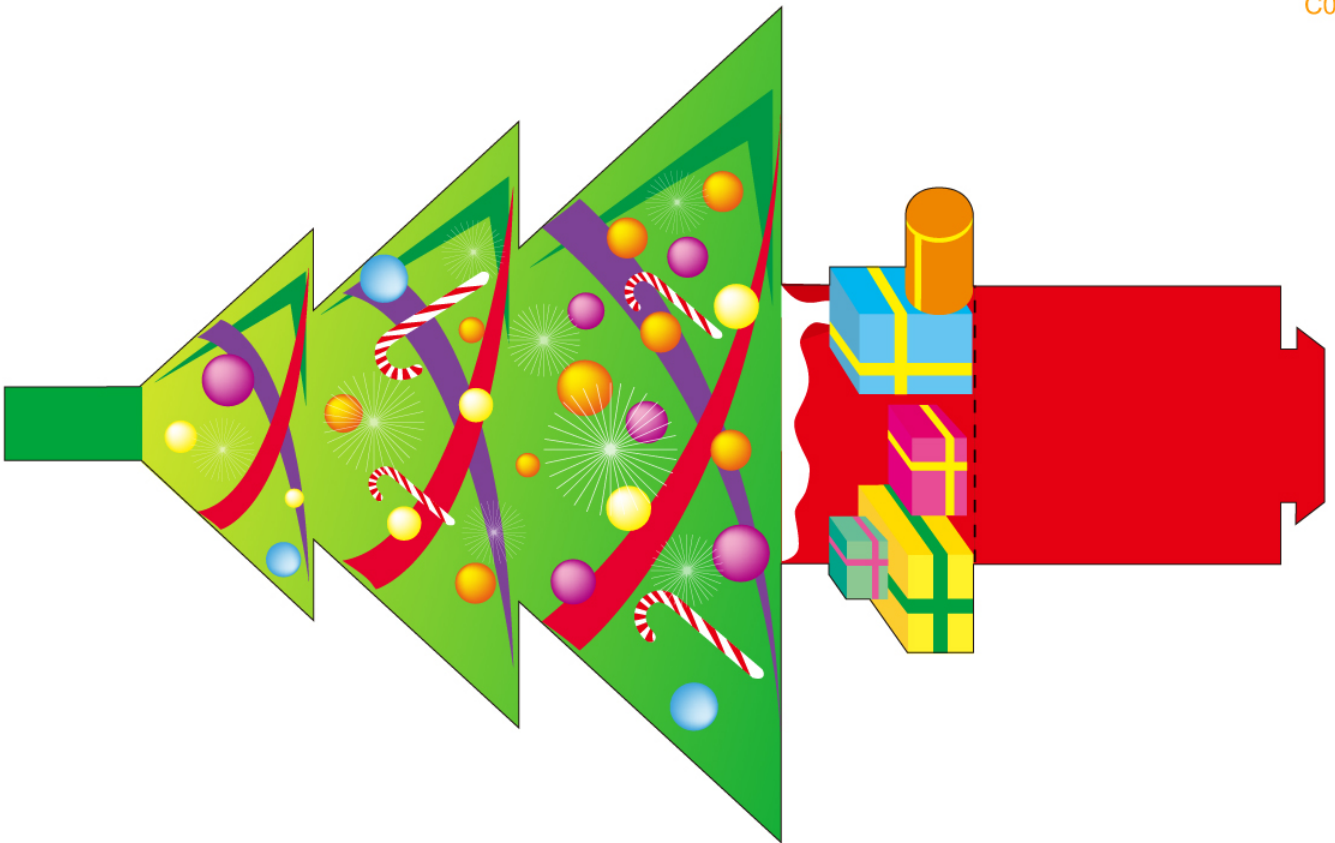
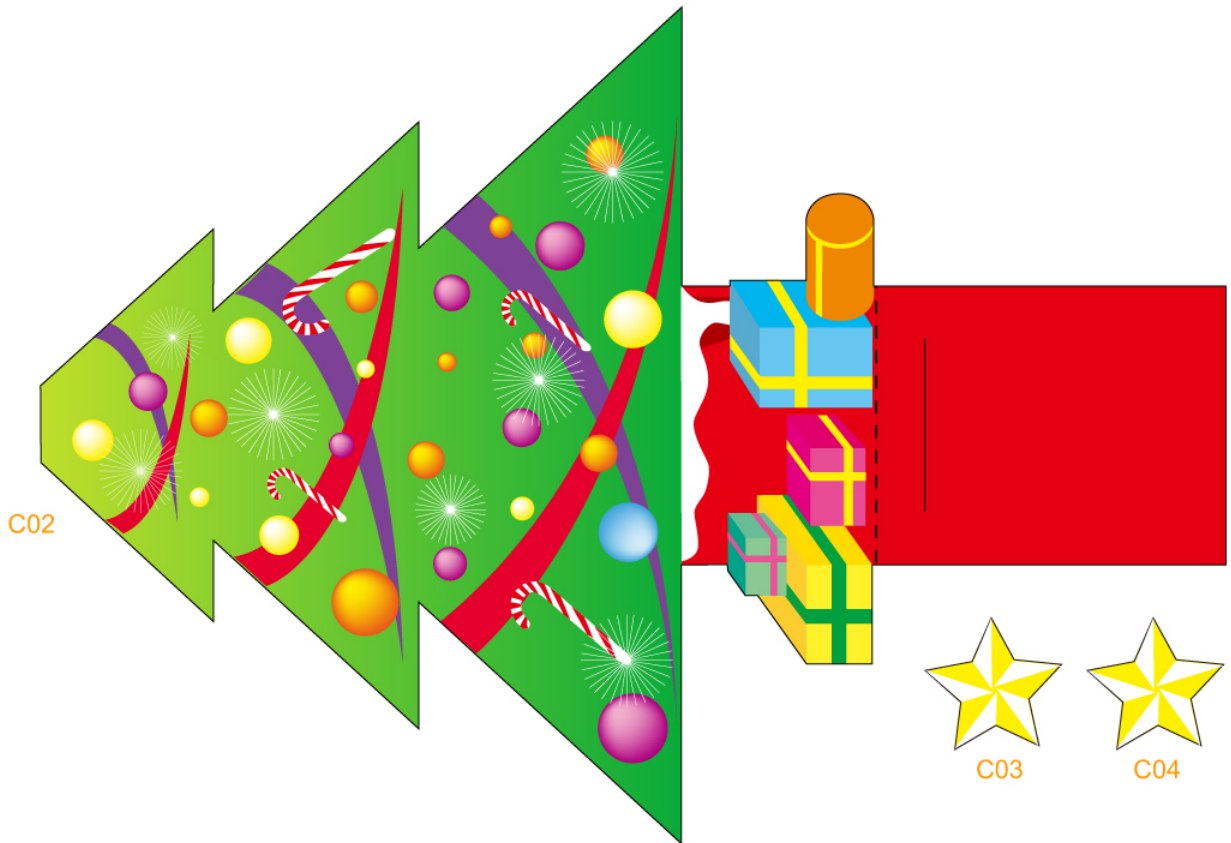
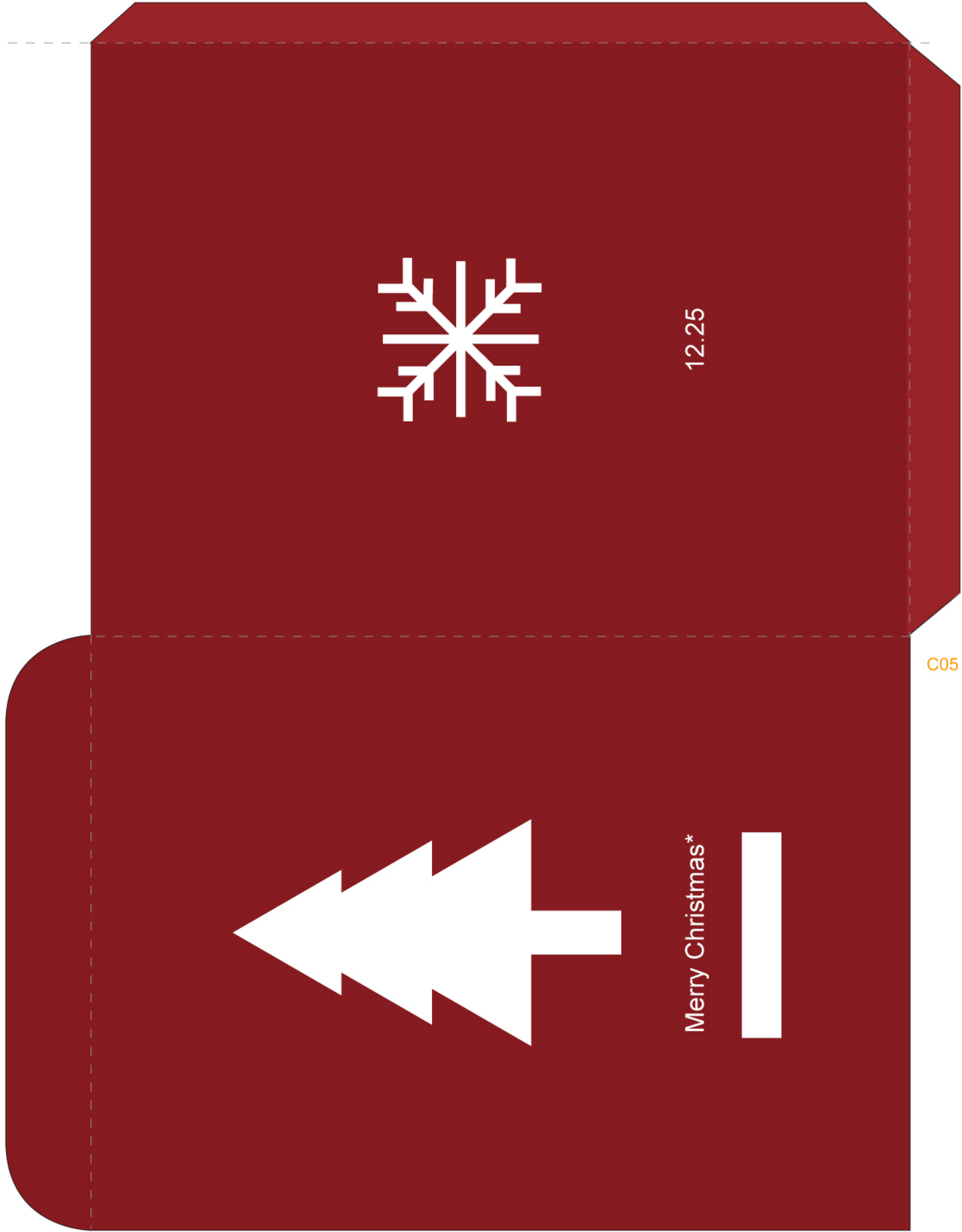


C01





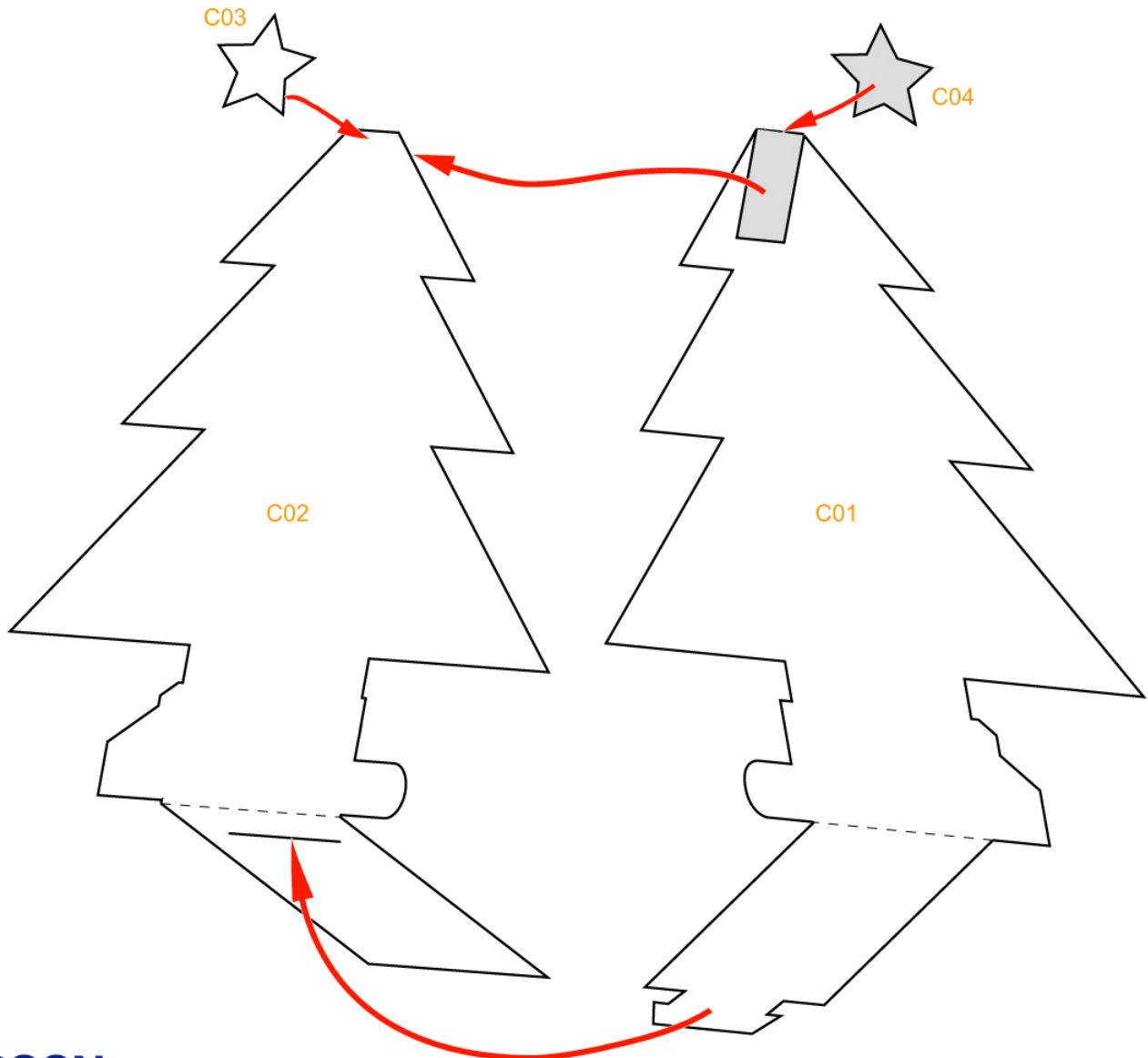
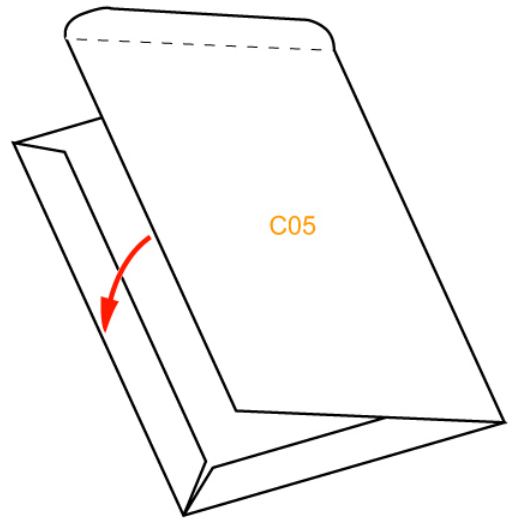
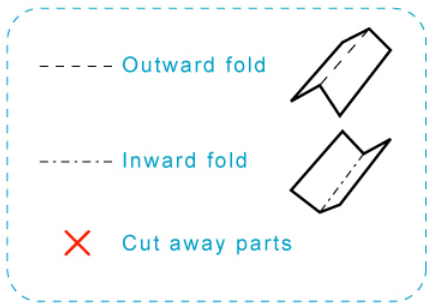


Assembly Instructions

--- Outward fold

--- Inward fold

✗ Cut away parts



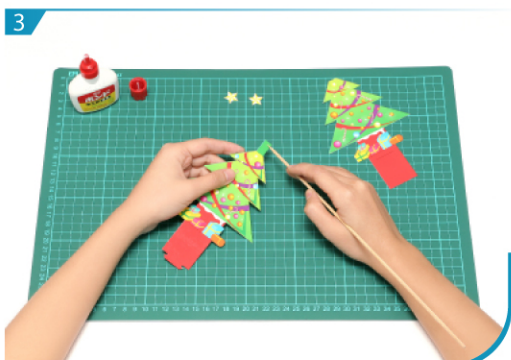
Instructions



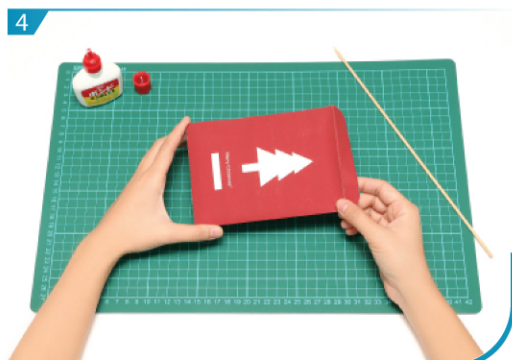
1 Use a pen whose ink has dried out, or a tracer, to trace lines first.



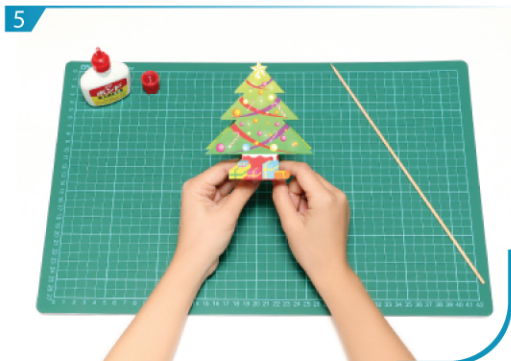
2 Fold and glue C01 and C02. Cut along all the black lines on C01 and then make a fine cut.



3 Glue C01 to C04 according to the assembly instruction.



4 Fold and glue C05 to form an envelope.



5 The beautiful Christmas Card is now done!