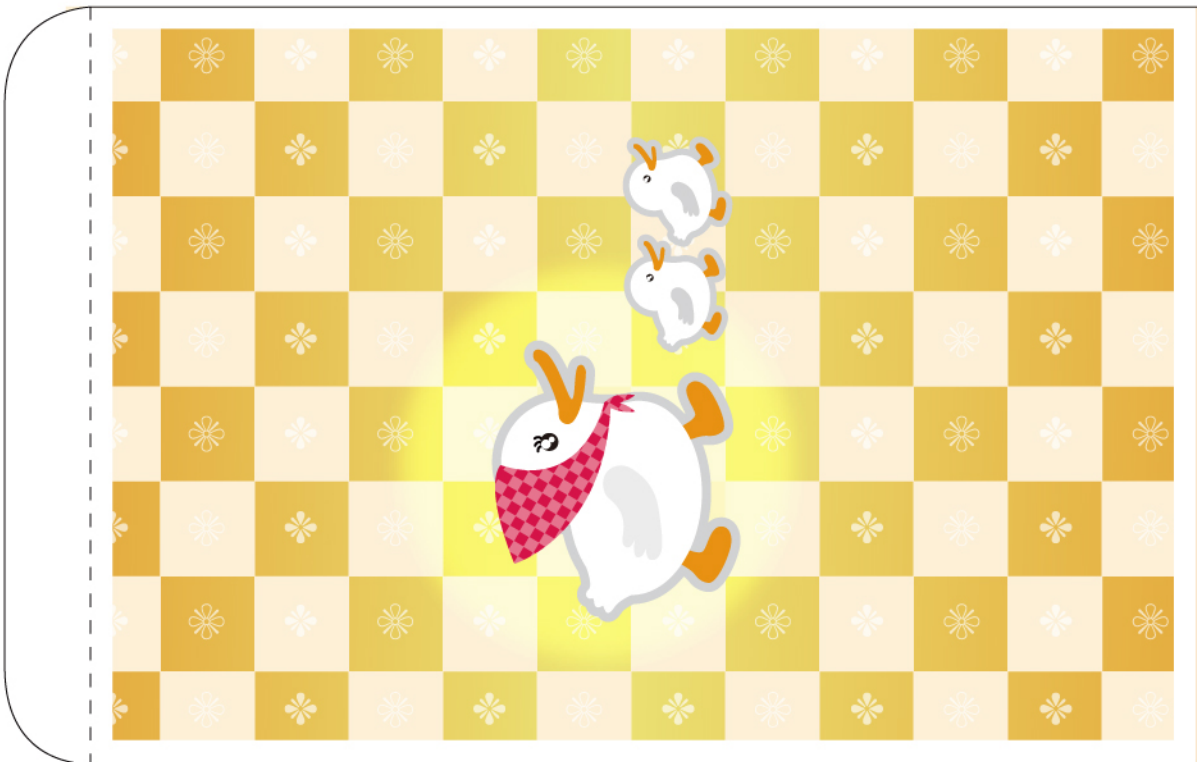
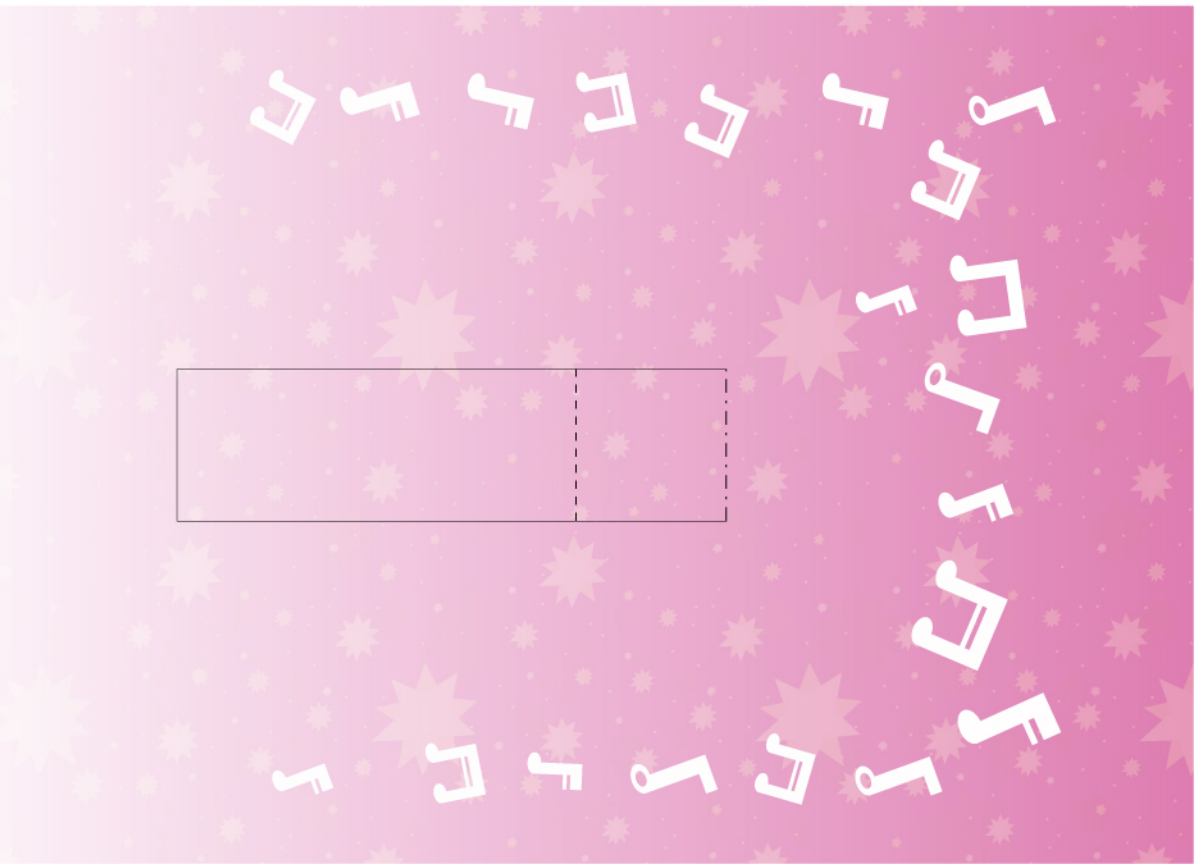


M01



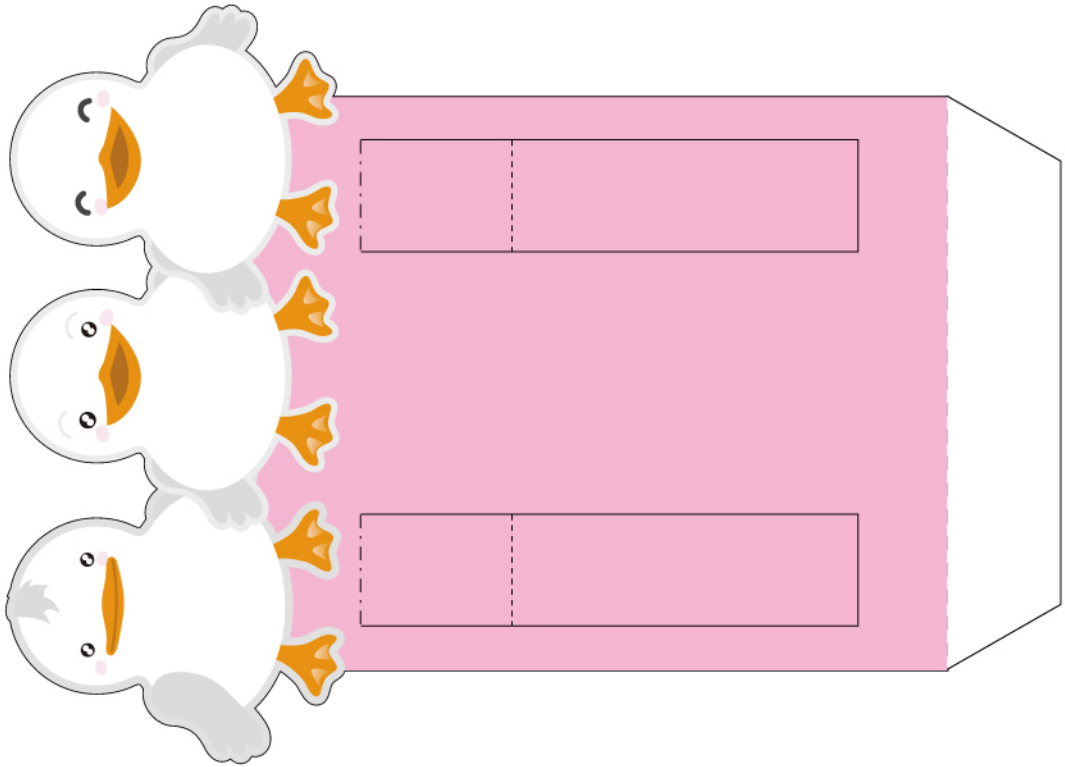
M02



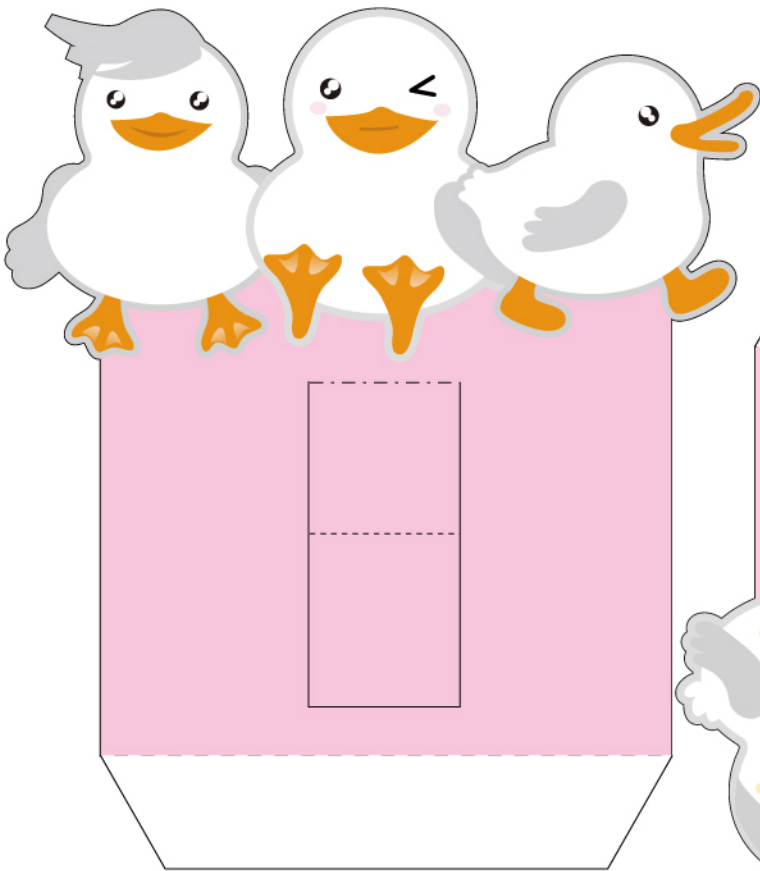
M03



M04



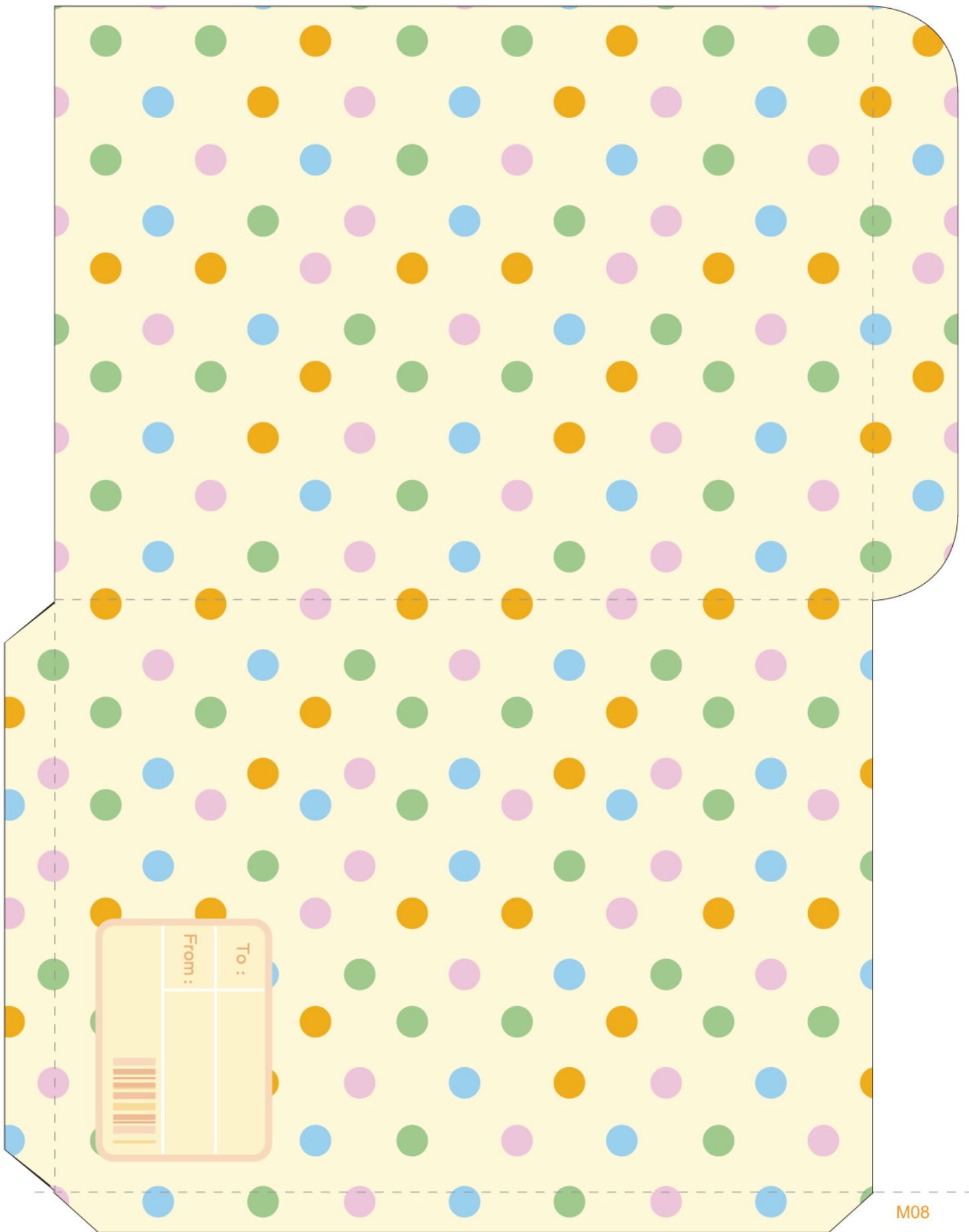
M05



M06



M07



M08



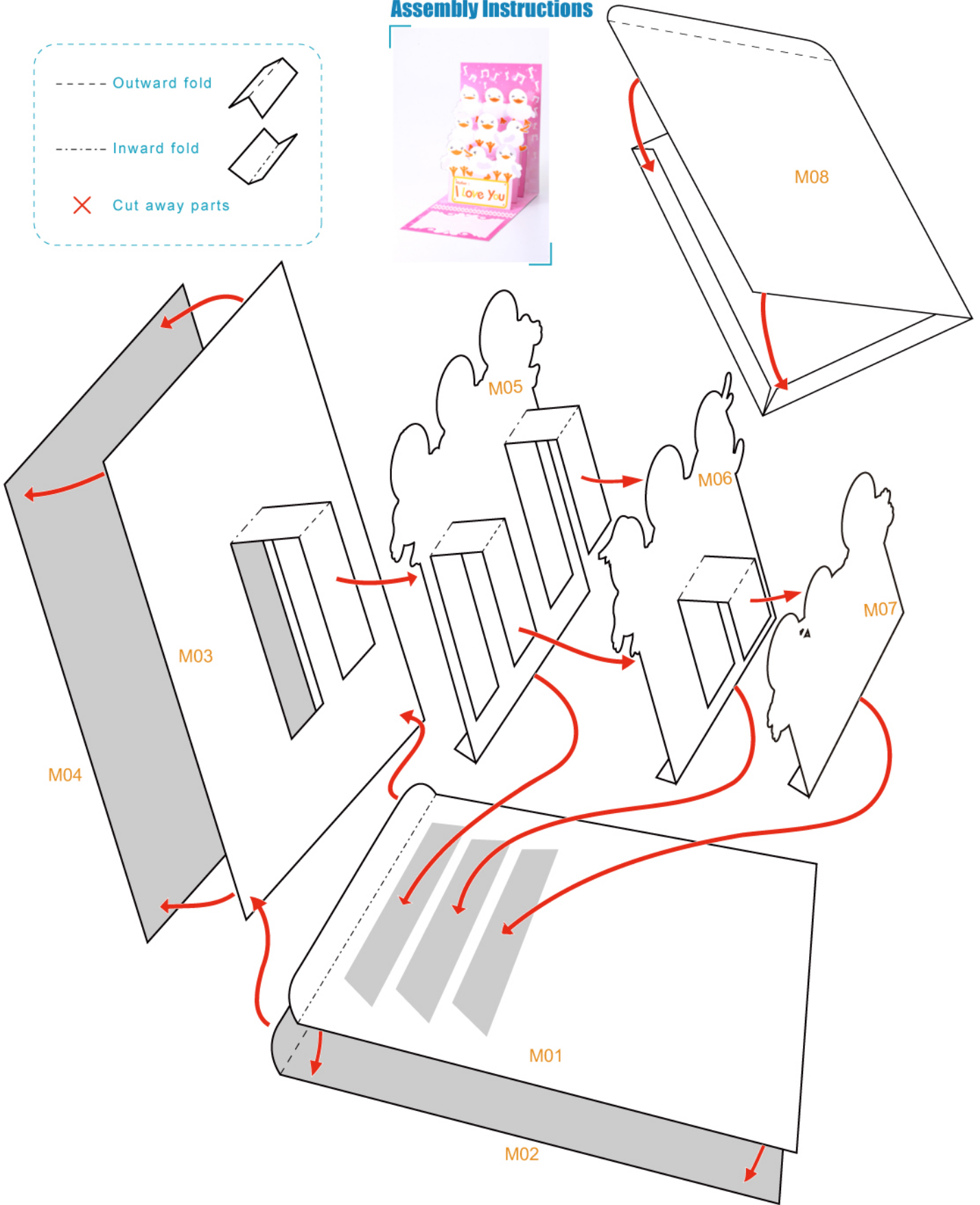
Assembly Instructions



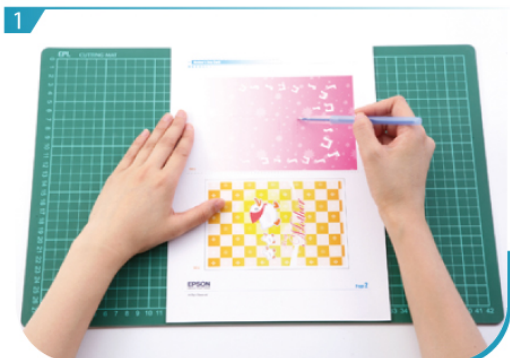
--- Outward fold

--- Inward fold

✗ Cut away parts



Instructions



1 Use a pen whose ink has dried out, or a tracer, to trace lines first.



2 Make cuts along all the black lines on M03, M05 and M06, and then fold them.



3 Fold and glue M01, M02 and M03, M04 and then make a fine cut.



4 Separate all parts along the lines. Mark their identity on the back to avoid confusion.



5 Fold and glue M08 to form an envelope.



6 Glue M01- M07 according to the assembly instruction and now you have this beautiful Mother's Day Card!